

COUNTY OF LOS ANGELES

ROAD DEPARTMENT



GARDENA QUAD

BENCH MARKS

1960

PREFACE

The Road Department level net is composed of some 1,000 miles of levels supporting more than 10,000 bench marks. In 1955, a major re-adjustment of the net was undertaken resulting in revised bench mark elevations of which the accompanying list is a part.

To facilitate the adjustment, indexing, and distribution of adjusted values of the net, the county territory was divided into 30 quads or areas. For identification purposes each quad was given a name, viz., "Rosemead", "La Mirada", "Santa Fe", etc. When bench marks and elevations in the Road Dept. net are used, the name of the quad in which the bench mark is located and the date of the adjustment of the elevation must be included in the bench mark description, e.g.,

SG 908 - L & T in E. cb. Muscatel Ave. on C/L prod.
Scott St. (Rosemead - 1955) Elev. 333.517

It is expected that this general adjustment will, for the most part, remain sound for the next 15 or 20 years. As new circuits are completed, however, re-adjustment of individual quads may become advisable. It is expected that these subsequent adjustments will be in the nature of a few hundredths of a foot. When a quad is re-adjusted, new elevation lists will be published and the date of the re-adjustment will replace the "1955" at the end of the bench mark description. Two bench marks in the same quad with different adjustment dates will not normally join each other. Since all adjustments taper out to nothing at the periphery of the quad, any bench mark in one quad will join any bench mark in another quad regardless of their respective adjustment dates.

The basic accuracy of the net is reflected by an indicated field probable error of ± 0.12 foot per mile of leveling as determined from 298 conditions of closure. However, many years experience in vertical control in the greater Los Angeles basin & Antelope Valley indicate that because of varying degrees of subsidence and heaving, the true datum is recovered only by obtaining substantial agreement of a number of bench marks.

The users of this net are invited to assist in its maintenance by notifying this Department of cases of obliteration, apparent mistakes in descriptions or elevations, and proven disturbance of bench marks.

Datum: U.S. Coast and Geodetic Survey Sea Level Datum of 1929, through the medium of the Los Angeles County Engineer Precise Level Net, 1952 Adjustment.

Abbreviations Used in Bench Mark Listings

ABUT--Abutment	L+BN--Lead and Bench Mark Nail
ANG PT--Angle Point	L+BR--Lead and Brad
BC--Beginning of Curve	L+N--Lead and Nail
BCR--Beginning of Curb Return	L+PK--Lead and PK Nail
BLDG--Building	L+SPK--Lead and Spike
BT SPK--Boat or Bolt Spike	L+T--Lead and Tack
CB RET--Curb Return	MCR--Middle of Curb Return
C/L INT--Center Line Intersection	MKD--Marked
C/L PROD--Center Line Produced	NR--Near
COE--Corps of Engineers	OPP--Opposite
CONC--Concrete	PI--Point of Intersection
CS MON--County Surveyor Monument	PK+W--PK Nail and Washer
CS BR CAP--County Surveyor Brass Cap Monument	P/L--Property Line
CT SPK--Cut Spike	P O S T--Point on Semi-tangent
CTR--Center	PP--Power Pole
DN--Down	PVMT--Pavement
DR--Driveway	R D--Road Department
EC--End of Curve	RDBM--Road Department Bench Mark
ENT--Entrance	RR--Railroad
FC--Flood Control (Dept. LA County)	SPK T+W--Spike, Tin and Washer
FTG--Footing	USC+GS--United States Coast and Geodetic Survey
HDWL--Headwall	USGS--United States Geological Survey
HSE--House	WK--Walk
IP--Iron Pipe	±--Plus or Minus
LACE--Los Angeles City Engineer	+--And

5716	5878 5879	5715 5714	5713 5712	1087	1086	1085	1084	1083	1082	1081	1080	1079	1078	1077	1076 1075	1074 1073	1072 1071	1070	1069	1068	1067	1066	1065	2353	2349
					3142					5872 5873													2354	169	
	3880 3881				3141 3140																		2355		
	3882				3139					5874 5876													2356	2356	
	3883 3884 3885		218 219 220		3138 3137 3136					5876 5877													2357	2358	
	3886				3135 3134																		2359	2360	
	3887		221		3133					5878 5879													2361	2362	
	3888 3889 3890 3891		222		3132																		2363	2364	
	3892		223		3131					5880 5881													2365	2366	
			224		3130																		2367	2368	
			225		3129					5882 5883													2369	2370	
5842 5861 5893	3893 3894 3895	5860 5859			3128 3127 3126																		2371	2372	
	3896				3125																		2373	2374	
					3124 3123																		2375	2376	
	3897 3898																						2377	2378	
																							2379	2380	
		4050																					2381	2382	
		4048 4047			3122 3121 3120					3954 3953 3956													2383	2384	
	3899	4050			3119 3118					3957 3958 3960													2385	2386	
		4051 4049			3117					263 3961 3962 3965													2387	2388	
																							2389	2390	
		4053 4052																					2391	2392	
					3116 3115																		2393	2394	
																							2395	2396	
	3903 3904 3905																						2397	2398	
	3906 3907 3908																						2399	2400	
																							2401	2402	
																							2403	2404	
																							2405	2406	
																							2407	2408	
																							2409	2410	
																							2411	2412	
																							2413	2414	
																							2415	2416	
																							2417	2418	
																							2419	2420	
																							2421	2422	
																							2423	2424	
																							2425	2426	
																							2427	2428	
																							2429	2430	
																							2431	2432	
																							2433	2434	
																							2435	2436	
																							2437	2438	
																							2439	2440	
																							2441	2442	
																							2443	2444	
																							2445	2446	
																							2447	2448	

GARDENA INDEX PG 1

CENTRAL AVE

ROSECRANS AVE

GARDENA INDEX PG 2

REDONDO BEACH BLVD

ARTESIA BLVD

VICTORIA ST

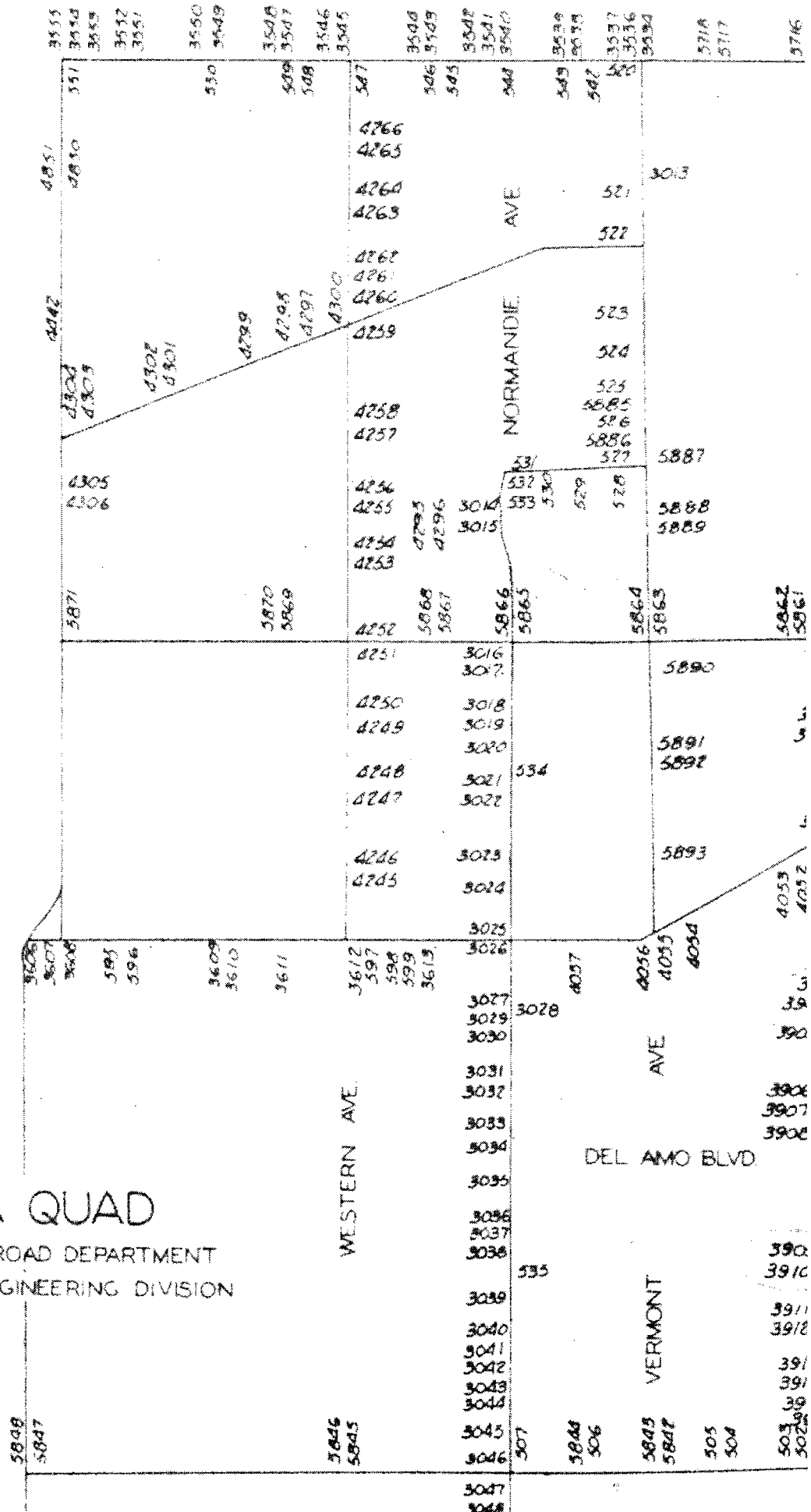
190TH ST

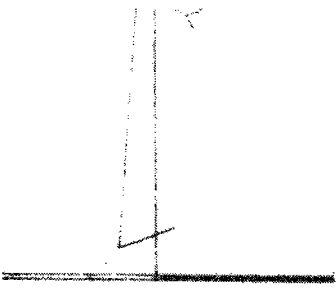
SCALE - 1 MILE

GARDENA QUAD

LOS ANGELES COUNTY ROAD DEPARTMENT
SURVEY SECTION FIELD ENGINEERING DIVISION

CARSON ST.

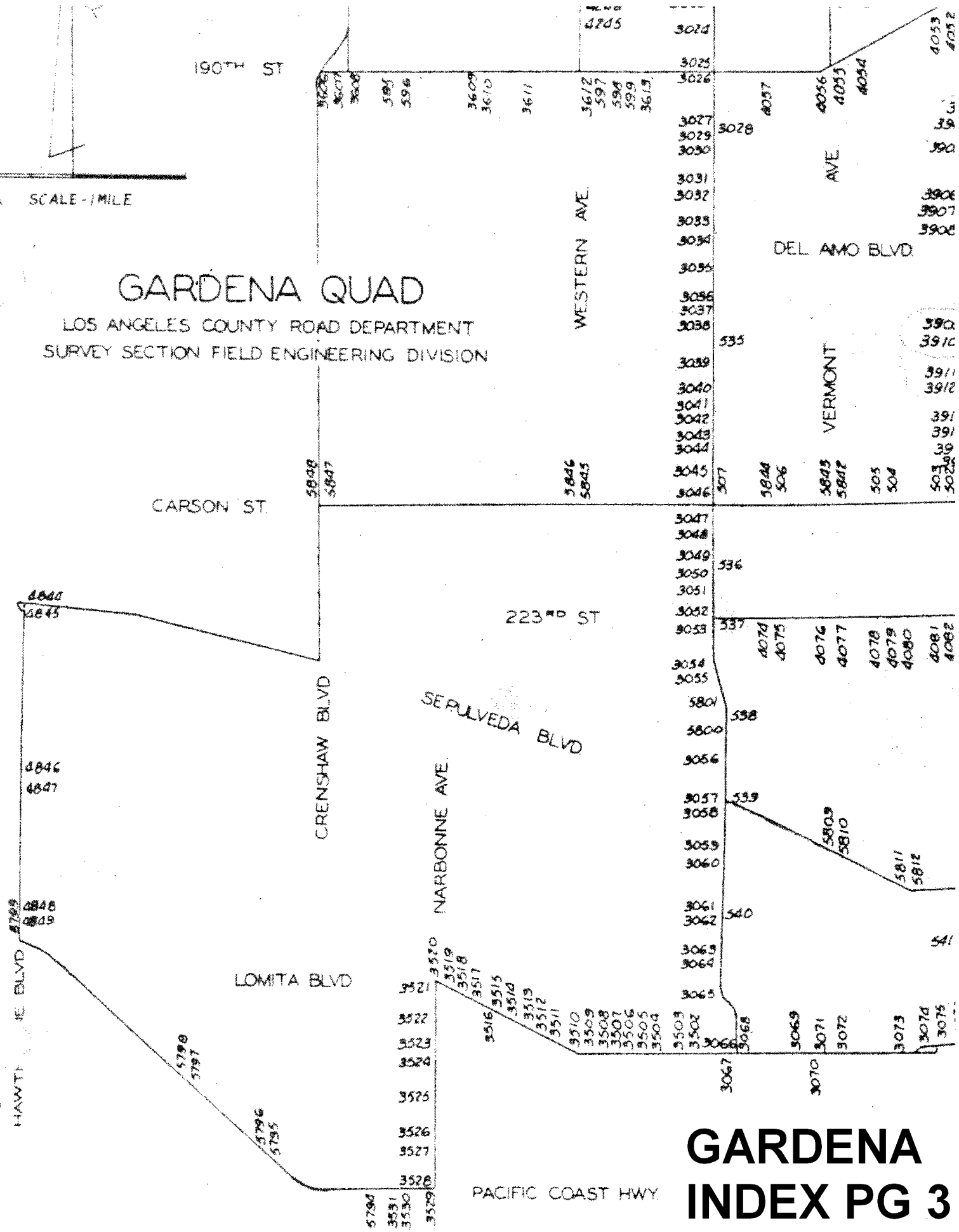




SCALE - 1 MILE

GARDENA QUAD

LOS ANGELES COUNTY ROAD DEPARTMENT
SURVEY SECTION FIELD ENGINEERING DIVISION



JUL 1964

LOS ANGELES COUNTY ROAD DEPARTMENT
SURVEY SECTION FIELD ENGINEERING DIVISION

PAGE 1

QUAD-YEAR	ELEV	DESCRIPTION (INCLUDE QUAD AND YEAR IN DESCRIPTION)	BM NUMBER
BASELINE (1955)	72.324	L+T E CB ALAMEDA ST 50FT± N C/L ROSECRANS BLVD	SY 169A
GARDENA (1960)	88.245	L+T NW STRADDLER C/L INT COMPTON BLVD + AVALON BLVD	SY 218A
GARDENA (1960)	74.287	L+T C/L 154TH ST 14FT± W C/L PVMT AVALON BLVD	SY 220
GARDENA (1960)	54.130	^{CSBM} L+T MON IN WELL 10IN DN @ PI AVALON BLVD C/L 165TH ST	SY 223A
GARDENA (1960)	48.862	L+T N COR TOWER NO 38 AVALON BLVD 1ST TOWER S OF 165TH ST	SY 224
GARDENA (1960)	50.626	CS MON IN WELL 8IN DN 15FT± W CTR TOWER NO 39 ON AVALON BLVD N ARTESIA BLVD MKD (BM 23-3)	SY 225A
GARDENA (1960)	19.789	CUT SPK NR E EDGE OF W CONC PVMT AVALON BLVD 300FT± S C/L 185TH ST	SY 226
GARDENA (1960)	15.491	BT SPK CONC BASE @ SW COR TOWER NO 50 C/L AVALON BLVD 7TH TOWER S VICTORIA ST	SY 227
GARDENA (1960)	13.153	L+N CONC BASE @ NE COR TOWER NO 51 C/L AVALON BLVD 8TH TOWER S OF VICTORIA ST	SY 228
GARDENA (1960)	11.607	L+SPK NR E EDGE PVMT AVALON BLVD 17FT± W CTR TOWER NO 52 9TH TOWER S OF VICTORIA ST	SY 229
GARDENA (1960)	OUT 11.575	L+N CONC BASE @ SW COR TOWER NO 53 ON C/L AVALON BLVD 10TH TOWER S OF VICTORIA ST	SY 230
GARDENA (1960)	13.399	L+SCREW CONC BASE @ NE COR TOWER NO 54 C/L AVALON BLVD 11TH TOWER S OF VICTORIA ST	SY 231A
GARDENA (1960)	11.769	L+T CONC BASE @ NE COR TOWER NO 55 C/L AVALON BLVD 12TH TOWER S OF VICTORIA ST	SY 232
GARDENA (1960)	12.097	FC BR CAP CONC WALL N SIDE OF TOWER NO 56 @ C/L AVALON BLVD 13TH TOWER S OF VICTORIA ST	SY 233
GARDENA (1960)	15.804	R D MON W CB 3FT± N C/L BRIDGE NO B-643 AVALON BLVD OVER DOMINGUEZ CHANNEL	SY 234
GARDENA (1960)	14.483	SE L+T STRADDLER @ INT 213TH ST + AVALON BLVD	SY 235
GARDENA (1960)	20.078	SE L+T STRADDLER @ INT CARSON ST + AVALON BLVD	SY 236
GARDENA (1960)	26.379	SE L+T STRADDLER @ C/L INT AVALON BLVD + 220TH ST	SY 237
GARDENA (1960)	29.129	SE L+T STRADDLER @ C/L INT AVALON BLVD + 223RD ST	SY 238
GARDENA (1960)	33.973	SPK PVMT 13FT± W C/L AVALON BLVD 1000FT± S 223RD ST 200FT± N ANGLE PT AVALON BLVD	SY 239
GARDENA (1960)	36.607	L+T 1FT± E SIDE ISLAND S OF S BCR @ BAYPORT ST + AVALON BLVD	SY 240
GARDENA (1960)	38.170	L+T W CB AVALON BLVD 1FT± S BCR @ SW COR IDABEL AVE	SY 241
GARDENA (1960)	41.762	L+N CONC WK 12FT± S C/L SFRR + 27FT± W C/L AVALON BLVD	SY 243
GARDENA (1960)	42.363	L+SPK @ INT 246TH ST E + AVALON BLVD	SY 244

JUL 1964

LOS ANGELES COUNTY ROAD DEPARTMENT
SURVEY SECTION FIELD ENGINEERING DIVISION

PAGE 2

QUAD-YEAR	ELEV	DESCRIPTION (INCLUDE QUAD AND YEAR IN DESCRIPTION)	BM	NUMBER
GARDENA (1960)	42.624	L+SPK @ INT 247TH ST + AVALON BLVD	SY	245
GARDENA (1960)	42.885	L+T @ INT 248TH ST E + AVALON BLVD	SY	246
GARDENA (1960)	43.149	L+SPK @ INT 249TH E ST + AVALON BLVD	SY	247
GARDENA (1960)	44.271	L+SPK 15FT± S OF END OF CB @ SW COR E LOMITA BLVD + AVALON BLVD	SY	248A
GARDENA (1960)	42.639	L+T 12FT± S BCR @ SE COR E LOMITA BLVD + BROAD AVE	SY	249A
BASELINE (1955)	42.889	L+SPK 4FT± N BCR @ NW COR LAKME AVE + LOMITA BLVD E	SY	25CA
BASELINE (1955)	41.373	L+BN 15FT± S BCR @ NE COR BAYPOINT AVE + LOMITA BLVD E	SY	251A
BASELINE (1955)	40.573	L+T 3FT± E OF END OF S CB LOMITA BLVD 17FT± E C/L PROD WILMINGTON AVE	SY	252A
GARDENA (1960)	179.603	L+T 3FT± E OF W CB CPP BLDG NO 1556 VICTORIA ST ON W ENT WK	SY	253
GARDENA (1960)	162.274	L+BN NE COR CONC BASE METER BOXES @ SW COR VICTORIA ST + WILMINGTON AVE	SY	254A
GARDENA (1960)	127.953	L+SPK 19FT± W C/L WILMINGTON AVE 1300FT N C/L VICTORIA ST	SY	255
GARDENA (1960)	180.389	L+BN SE COR CONC FOUNDATION OF ABANDONED OIL WELL 115FT± W C/L WILMINGTON AVE 1300FT± S C/L VICTORIA ST MKD (BM)	SY	256A
GARDENA (1960)	179.591	L+SPK PVMT 19FT± W C/L WILMINGTON AVE 1300FT± S VICTORIA ST	SY	260
GARDENA (1960)	191.652	L+SPK PVMT 19FT± W C/L WILMINGTON AVE 2600FT± S VICTORIA ST	SY	261
GARDENA (1960)	157.486	L+SPK PVMT 19FT± W C/L WILMINGTON AVE 3800FT± S VICTORIA ST	SY	262
GARDENA (1960)	77.215	SPK PVMT 19FT± E C/L WILMINGTON AVE 1890FT± N DEL AMO BLVD	SY	263A
GARDENA (1960)	77.190	SPK PVMT 19FT± W C/L WILMINGTON AVE 1890FT± N DEL AMO BLVD	SY	264A
GARDENA (1960)	31.836	L+BN CONC FOOTING 6FT CHAIN LINK FENCE 50FT± N C/L DEL AMO BLVD + 15FT± W C/L RR SPAR TRACK 1000FT± E WILMINGTON AVE MKD (BM)	SY	265A
GARDENA (1960)	28.325	L+BN E END CB 40FT± N C/L DEL AMO BLVD 800FT± E WILMINGTON AVE	SY	266A
GARDENA (1960)	25.794	SPK PVMT 19FT± W C/L WILMINGTON AVE 1345FT± S DEL AMO BLVD	SY	268
GARDENA (1960)	25.878	SPK PVMT 19FT± E C/L WILMINGTON AVE 1345FT± S DEL AMO BLVD	SY	269
GARDENA (1960)	25.530	L+T 3FT± N BCR @ NW COR WILMINGTON AVE + DOMINGUEZ ST	SY	270A
GARDENA (1960)	25.730	L+T CONC FOOTING SHELL OIL CO SIGN @ NW COR WILMINGTON AVE + DOMINGUEZ ST 45FT N + 60FT W C/L INT MKD (BM)	SY	271A

QUAD-YEAR	ELEV	DESCRIPTION (INCLUDE QUAD AND YEAR IN DESCRIPTION)	BM NUMBER
GARDENA (1960)	23.577	SPK PVMT 19FT# E C/L WILMINGTON AVE OPP C/L INT @ 213TH ST	SY 272
GARDENA (1960)	23.549	SPK PVMT 19FT# W C/L WILMINGTON AVE OPP C/L INT @ 213TH ST	SY 273
GARDENA (1960)	24.839	L+BN N SIDE CONC BASE OF SIGNAL @ SW COR CARSON ST + WILMINGTON AVE	SY 274A
GARDENA (1960)	21.901	SPK PVMT 19FT# E C/L WILMINGTON AVE OPP C/L INT 220TH ST	SY 275
GARDENA (1960)	21.837	SPK PVMT 19FT# W C/L INT WILMINGTON AVE OPP C/L INT @ 220TH ST	SY 276
GARDENA (1960)	21.744	SPK PVMT 19FT# E C/L WILMINGTON AVE 1415FT# S 223RD ST	SY 278
GARDENA (1960)	21.866	SPK PVMT 19FT# W C/L WILMINGTON AVE 1415FT# S 223RD ST	SY 279
GARDENA (1960)	29.576	SPK PVMT 19FT# E C/L WILMINGTON AVE 2830FT# S 223RD ST	SY 280
GARDENA (1960)	30.187	SPK PVMT 19FT# E C/L WILMINGTON AVE 5FT# N END CONC 3150FT# S 223RD ST	SY 281
GARDENA (1960)	30.302	SPK PVMT 19FT# W C/L WILMINGTON AVE 5FT# N END CONC 3160FT# S 223RD ST	SY 282
GARDENA (1960)	37.619	L+N N CB 65FT# E C/L WILMINGTON AVE ON N CB LINE SEPULVEDA BLVD	SY 283
GARDENA (1960)	37.594	L+N S CB 80FT# E C/L WILMINGTON AVE ON S CB LINE SEPULVEDA BLVD	SY 284
GARDENA (1960)	39.017	L+T S EDGE CONC DRWY HSE NO 24119 35FT# W C/L WILMINGTON AVE	SY 285A
BASELINE (1955)	23.839	L+SPK W CB ALAMEDA BLVD 50FT# N C/L 223RD ST	SY 344A
BASELINE (1955)	19.167	FC MON CONC POST 75FT# N C/L SEPULVEDA BLVD W 28FT# W C/L ALAMEDA BLVD	SY 345
BASELINE (1955)	33.022	L+T E HDWL SPRR CULV NO 497.3 25FT# E C/L MAIN TRACK 68FT# W C/L ALAMEDA ST 1400FT# N DOMINGUEZ ST	SY 347
BASELINE (1955)	36.795	L+T NW COR SP SIGNAL SWITCH BOX NO 4972 35FT# S C/L DEL AMC BLVD + 25FT# E C/L MAIN LINE SPRR	SY 371A
GARDENA (1960)	23.549	BOLT CONC WK 60FT# S C/L CARSON ST 25FT# E C/L GRACE ST	SY 499
GARDENA (1960)	21.829	CS MON IN WELL ICIN DN @ C/L INT CARSON ST + GRACE AVE	SY 500A
GARDENA (1960)	33.141	CUT SPK PVMT 11FT# W C/L MAIN ST 40FT S C/L CARSON ST	SY 501
GARDENA (1960)	37.043	L+BR CONC DRWY HSE ON NE COR CARSON ST + MONETA AVE 52FT# N + 26FT# E C/L INT	SY 502A
GARDENA (1960)	36.447	SPK IN WK 40FT# N C/L CARSON ST 50FT# W C/L MONETA AVE	SY 503
GARDENA (1960)	39.964	SPK IN AUTOMATIC SIGNAL BASE 30FT N C/L CARSON ST 42FT# E C/L FIGUEROA ST	SY 504

QUAD-YEAR	ELEV	DESCRIPTION (INCLUDE QUAD AND YEAR IN DESCRIPTION)	BM NUMBER
GARDENA (1960)	39.229	LACE TRIANGULATION MON IN WELL 14IN DN @ C/L INT CARSON ST + FIGUEROA ST	SY 505A
GARDENA (1960)	41.630	SPK CONC BASE 5FT± W FLAG POLE @ ENT TO HARBOR HOSPITAL ON S SIDE CARSON ST 100FT± E NORMANDIE AVE	SY 506
GARDENA (1960)	46.490	L+N NR N END CB RET NW COR NORMANDIE AVE + CARSON ST	SY 507
GARDENA (1960)	49.128	L+T @ C/L INT VERMONT AVE W PROD + COMPTON BLVD	SY 521
GARDENA (1960)	51.374	CUT SPK @ C/L INT VERMONT AVE W PROD + REDONDO BEACH BLVD	SY 522
GARDENA (1960)	46.322	L+T W CB VERMONT AVE 1FT± S BCR @ SW COR MAGNOLIA AVE	SY 523
GARDENA (1960)	42.823	L+N W CB VERMONT AVE 1FT± S BCR @ SW COR 159TH ST	SY 524
GARDENA (1960)	40.636	L+N S CB VERMONT AVE 1FT± N BCR @ NW COR 161ST ST	SY 525
GARDENA (1960)	37.672	L+N W CB 164TH ST 5FT± W BCR @ NW COR BERENDO AVE	SY 528
GARDENA (1960)	38.474	L+N N CB 164TH ST 5FT± E BCR @ NE COR BUDLONG AVE	SY 529
GARDENA (1960)	37.324	L+N S CB 164TH ST 2FT± W BCR @ SW COR RAYMOND AVE	SY 530
GARDENA (1960)	35.661	CUT SPK CTR CB RET @ NE COR NORMANDIE AVE + GARDENA BLVD	SY 532
GARDENA (1960)	34.752	L+N W CB NORMANDIE AVE 5FT± S BCR @ SW COR 166TH ST	SY 533
GARDENA (1960)	43.865	L+T W CB NORMANDIE AVE C/L PROD 223RD ST	SY 534
GARDENA (1960)	38.789	L+T NR S END CB RET @ SW COR NORMANDIE AVE + EAST RD OR 208TH ST	SY 535
GARDENA (1960)	44.395	L+T 2FT N OF S END CB W SIDE NORMANDIE AVE ON N SIDE 220TH ST	SY 536
GARDENA (1960)	45.930	L+T W CB NORMANDIE AVE C/L PROD 223RD ST	SY 537
GARDENA (1960)	48.002	L+T 1FT± S BCR @ SW COR NORMANDIE AVE + OCEAN AVE	SY 538
GARDENA (1960)	56.927	L+W SP 1FT± N @ SW COR NORMANDIE AVE + SEPULVEDA BLVD	SY 539
GARDENA (1960)	37.428	WIRE SPK W CB NORMANDIE AVE 48FT± N CTR AT+SFRR ABUT	SY 540
BASELINE (1955)	46.904	L+T 16FT± W C/L NORMANDIE AVE 12FT± S C/L ROSECRANS BLVD	SY 544A
BASELINE (1955)	46.587	L+T 26FT± E C/L HALLDALE AVE + 12FT± S C/L ROSECRANS BLVD	SY 545A
BASELINE (1955)	46.204	L+T 26FT± E C/L DENKER AVE + 12FT± S C/L ROSECRANS BLVD	SY 546A

OUT **OUT** **OUT**

JUL 1964

LOS ANGELES COUNTY ROAD DEPARTMENT
SURVEY SECTION FIELD ENGINEERING DIVISION

PAGE 5

QUAD-YEAR	ELEV	DESCRIPTION (INCLUDE QUAD AND YEAR IN DESCRIPTION)	BM NUMBER
BASELINE (1955)	47.629	L+T 1FT± N BCR @ NE COR WESTERN AVE + ROSECRANS AVE 40FT± E + 65FT± N	SY 5478
BASELINE (1955)	54.390	FC BRASS PLATE NR N CB ROSECRANS AVE 122FT± E C/L CRENSHAW BLVD	SY 551A
GARDENA (1960)	61.441	CHIS SQ CTR CULV HDWL N SIDE 190TH ST 30FT± W PP NO 313625E C.2MI± E CRENSHAW BLVD	SY 595
GARDENA (1960)	56.695	(X) CTR CULV HDWL N SIDE 190TH ST 20FT± E PP NO 313620 E C.4MI± E CRENSHAW BLVD	SY 596
GARDENA (1960)	55.459	L+T NW COR CONC BASE MET WATER CO AIR VENT 29FT± S C/L 190TH ST 87FT± E WESTERN AVE	SY 597
GARDENA (1960)	51.841	L+SPK CTR CONC HDWL 57FT± S C/L 190TH ST 80FT± E END OF HARVEY MACHINE CO 1100FT± E WESTERN AVE	SY 598A
BASELINE (1955)	70.181	L+T NR CTR CB RET @ NE COR MONA AVE E BARREL + ROSECRANS AVE	SY 1065
BASELINE (1955)	70.256	L+T NR CTR CB RET @ NW COR WILLOWBROOK AVE W BARREL + ROSECRANS AVE	SY 1066A
BASELINE (1955)	70.005	L+T NR CTR CB RET @ NE COR ACACIA ST + ROSECRANS AVE	SY 1067A
BASELINE (1955)	71.553	L+N 5FT± W CB RET @ NE COR BLEANDER ST + ROSECRANS AVE	SY 1068A
BASELINE (1955)	72.565	L+T CTR CB RET NE COR ROSECRANS AVE + ARANBE AVE	SY 1069A
BASELINE (1955)	73.373	L+T CTR CB RET NE COR ROSECRANS AVE + MATTHISEN AVE	SY 1070A
BASELINE (1955)	75.548	L+T CTR CB RET NW COR WILMINGTON AVE + ROSECRANS AVE	SY 1071A
BASELINE (1955)	75.581	L+T CTR CB RET NW COR WILMINGTON AVE + ROSECRANS AVE	SY 1072A
BASELINE (1955)	76.319	CS MON IN WELL 38FT± N C/L ROSECRANS AVE + 38FT± W OF NW COR CONC BRIDGE OVER COMPTON CREEK 164FT± E C/L DWIGHT ST MKD (CS MON BM 21-2-1952 RE 63)	SY 1073A
BASELINE (1955)	77.797	L+BN N CB 2FT± E BCR @ NE COR ROSECRANS AVE + DWIGHT ST 38FT± N + 35FT± E C/L INT	SY 1074A
BASELINE (1955)	85.963	L+BN N CB 15FT± W BCR @ NW COR ROSECRANS AVE + TAJUATA AVE 36FT± N + 70FT± W C/L INT	SY 1075A
BASELINE (1955)	85.543	L+N E CB TAJUATA AVE 60FT± S C/L ROSECRANS AVE	SY 1076
BASELINE (1955)	100.824	CS MON IN WELL 44FT± N C/L ROSECRANS AVE 105FT± E C/L CENTRAL AVE 32FT± E BCR 4FT± N CB MKD (BM 21-3 1952 RE 63)	SY 1078A
BASELINE (1955)	102.993	L+T E EDGE CONC PVMT 14FT± E C/L CENTRAL AVE + 65FT± S C/L ROSECRANS AVE	SY 1079A
BASELINE (1955)	103.475	L+BN N CB ROSECRANS AVE 2FT± W BCR + 44FT N C/L ROSECRANS AVE + 92FT± W C/L CENTRAL AVE	SY 1080A
BASELINE (1955)	105.898	L+BN 4IN S BCR @ SE COR KEENE AVE+ ROSECRANS AVE	SY 1081A

JUL 1964

LOS ANGELES COUNTY ROAD DEPARTMENT
SURVEY SECTION FIELD ENGINEERING DIVISION

PAGE 6

QUAD-YEAR	ELEV	DESCRIPTION (INCLUDE QUAD AND YEAR IN DESCRIPTION)	BM NUMBER
BASELINE (1955)	110.325	L+T S CB CENTRAL AVE SERVICE RD 1FT± E BCR 55FT± E C/L CAHITA AVE + 76FT± S C/L ROSECRANS AVE MKD (BM)	SY 1083A
BASELINE (1955)	113.842	L+T NW COR HIGH TENSION LINE 65FT± S C/L ROSECRANS AVE 35FT± E C/L MCKINLEY AVE TOWER NO 25	SY 1084A
BASELINE (1955)	114.526	L+BN N CB ROSECRANS AVE 1FT± 1FT± W BCR @ NW COR ROSECRANS AVE + STANFORD AVE 40FT± N + 52FT± W C/L INT	SY 1085A
BASELINE (1955)	118.101	L+T SW COR S GAS ISLAND 60FT N C/L ROSECRANS AVE + 100FT± E C/L AVALON BLVD	SY 1086B
BASELINE (1955)	118.234	L+T SW COR W GAS ISLAND 110FT± N C/L ROSECRANS AVE + 58FT± E C/L AVALON BLVD	SY 1087A
GARDENA (1960)	42.880	CS MON 15FT± E C/L AVALON BLVD W BARREL W OF POWER TRANSMISSION TOWER NO 44 1ST TOWER S OF VICTORIA ST	SY 2171
BASELINE (1955)	72.180	L+T E CB 2FT± S BCR @ SE COR ALAMEDA ST + ROSECRANS BLVD	SY 2353A
BASELINE (1955)	69.456	L+T E CB 26FT± E C/L ALAMEDA ST W BARREL + C/L PROD MAPLE ST	SY 2354A
BASELINE (1955)	68.972	L+BN N CB COMPTON BLVD 13FT± E OF E RAIL OF SPRR 29FT± W CB RET @ NW COR ALAMEDA ST E DR + COMPTON BLVD 60FT± W C/L E DRIVE 28FT± N C/L COMPTON BLVD	SY 2356A
BASELINE (1955)	69.164	L+BN S CB COMPTON BLVD 5FT± E OF E RAIL OF SPRR 29FT± W CB RET @ SW COR ALAMEDA ST E DR + COMPTON BLVD 70FT± W C/L E DRIVE 28FT± N C/L COMPTON BLVD	SY 2357A
BASELINE (1955)	65.802	L+T 25FT± W C/L ALAMEDA ST E BARREL ON C/L PROD LAUREL ST TO THE E	SY 2358A
BASELINE (1955)	66.197	L+T W CB @ BCR @ NW COR ALAMEDA ST E BARREL + LAUREL ST TO THE W 25FT± W + 32FT± N C/L INT	SY 2359A
BASELINE (1955)	64.431	STEEL SPK WITH (X) ON TOP CTR S BCR TO DRWY OF COMPTON STREET DEPT NO 458 S ALAMEDA ST 29FT± E C/L E BARREL 180FT± N MYRRH ST	SY 2360A
BASELINE (1955)	65.448	CS MON IN WELL 10IN DN 50FT± E C/L SPRR 27FT± W C/L ALAMEDA ST E BARREL + 18FT± S C/L PROD MYRRH ST TO THE E MKD (BM 5-22A)	SY 2361A
BASELINE (1955)	64.997	L+BN W CB ALAMEDA ST E BARREL 12FT± E OF 5TH TELEGRAPH POLE N OF OLIVE ST 530FT± S OF MYRRH ST 25FT± W C/L	SY 2362A
BASELINE (1955)	66.096	L+T IN CB ALONDRA BLVD 20FT± E OF E RAIL OF SPRR 40FT± W C/L ALAMEDA ST E BARREL 30FT± N C/L ALONDRA BLVD	SY 2363A
BASELINE (1955)	65.257	L+T CTR CB RET @ SE COR ALONDRA BLVD + ALAMEDA ST W BARREL 45FT± E C/L W BARREL + 41FT± S C/L ALONDRA BLVD	SY 2364A
BASELINE (1955)	63.023	L+T E CB ALAMEDA ST C/L PROD RAYMOND AVE 27FT± E C/L ALAMEDA ST	SY 2365A
BASELINE (1955)	62.777	L+T E CB ALAMEDA ST C/L PROD REEVE ST	SY 2366A

JUL 1964

LOS ANGELES COUNTY ROAD DEPARTMENT
SURVEY SECTION FIELD ENGINEERING DIVISION

PAGE 7

QUAD-YEAR	ELEV	DESCRIPTION (INCLUDE QUAD AND YEAR IN DESCRIPTION)	BM NUMBER
BASELINE (1955)	62.408	L+T E CB ALAMEDA ST C/L PROD TICHNOR ST	SY 2367A
BASELINE (1955)	62.130	L+T E CB ALAMEDA ST C/L PROD CALDWELL ST 26FT# E C/L ALAMEDA ST	SY 2368A
BASELINE (1955)	61.826	L+T E ALAMEDA ST C/L PROD JOHNSON ST	SY 2369A
BASELINE (1955)	61.518	L+T E CB ALAMEDA ST C/L PROD BENNETT ST TO THE W	SY 2370A
BASELINE (1955)	60.757	L+BN E CB ALAMEDA ST OPP MILE POST NO 495 SPRR	SY 2373A
BASELINE (1955)	60.279	STD DISC TOP OF CONC POST 3FT# N OF MILE POST NO 495 SPRR + 38FT# E C/L SPRR 2FT# BELOW TOP OF RAIL MKD (Q 768 1945)	SY 2374A
BASELINE (1955)	59.741	L+BN E CB ALAMEDA ST OPP PP NO 1328507E W SIDE SPRR + 4TH TP N CF ARTESIA AVE	SY 2375A
BASELINE (1955)	63.442	L+BN E CB ALAMEDA ST @ ANGLE POINT OF WINGWALL @ NE COR BRIDGE NO 774 OVER COMPTON CREEK 22FT# E C/L + 174FT# N C/L CREEK + 400FT# S ARTESIA BLVD	SY 2377A
BASELINE (1955)	58.668	FC BR CAP @ S END OF WINGWALL @ NE COR SPRR BRIDGE 90FT# E C/L ALAMEDA ST + 450FT# S C/L ARTESIA BLVD MKD (RBM 44-33)	SY 2378A
BASELINE (1955)	63.474	FC BR CAP 5FT# S ANGLE POINT WINGWALL SW COR BRIDGE NO 774 ON ALAMEDA ST OVER COMPTON CREEK 28FT# W C/L + 600FT# S ARTESIA BLVD MKD (BM 44-33)	SY 2379A
BASELINE (1955)	52.041	FC BR CAP E CB ALAMEDA ST 22FT# E C/L OPP MAIN ENT DOMINGUEZ SEMINARY 0.25MI# N DOMINGUEZ JCT 18FT# S PP NO 241560E MKD (RBM 44-32)	SY 2380A
BASELINE (1955)	53.343	FC BR CAP SE COR 8X8FT CONC VALVE BOX 58FT# E C/L SPRR + 125FT# E C/L ALAMEDA ST OPP MAIN ENT TO DOMINGUEZ SEMINARY MKD (BM 44-32)	SY 2381A
BASELINE (1955)	51.101	L+BN W CB ALAMEDA ST 22FT# W C/L OPP NE COR 8FT CHAIN LINK FENCE AROUND SO CAL EDISON SUB-STATION PROPERTY 650FT# N DOMINGUEZ JCT	SY 2382A
BASELINE (1955)	51.999	CS MON IN CONC FLUSH APPROX C/L PERR TRACTS 50FT# W C/L ALAMEDA ST 56FT# N OF N COR DOMINGUEZ JCT STA HSE BET ARTESIA BLVD + DEL AMO BLVD MKD (K-5 RE 2177 1942)	SY 2383A
BASELINE (1955)	47.192	L+BN W CB ALAMEDA ST 22FT# W C/L + 530FT# S C/L LONG BEACH LINE PERR 37FT# N TP NO 16767R	SY 2384A
BASELINE (1955)	46.369	L+BN E CB ALAMEDA ST 22FT# E C/L + 1630FT# S C/L LONG BEACH LINE PERR 47FT# S TP NO 662675H	SY 2385A
BASELINE (1955)	44.715	L+BN E CB ALAMEDA ST 2 BARREL 22FT# E C/L 3FT# S TP NO 46810CH 2630FT# S C/L LONG BEACH LINE PERR	SY 2386A
BASELINE (1955)	43.410	L+T E CB ALAMEDA ST W BARREL 22FT# E C/L 3FT# S TP NO 4469US 0.5MI# N DEL AMO BLVD	SY 2387A
BASELINE (1955)	43.403	STD USGS DISC IN CONC POST 3IN UP 30FT# E C/L SPRR 55FT# W C/L ALAMEDA ST E BARREL OPP BLDG NO 19600 (WOLF RANGE CORP) 4FT# N TP NO LU 2FT# W OF WHITE WOODEN WITNESS POST MKD (P768 1945)	SY 2388A

QUAD-YEAR	ELEV	DESCRIPTION (INCLUDE QUAD AND YEAR IN DESCRIPTION)	BM NUMBER
BASELINE (1955)	41.859	L+BN E CB ALAMEDA ST W BARREL 22FT± E C/L 3FT± S OF TP NO 429291H OPP BLDG NO 19722	SY 2389A
BASELINE (1955)	41.348	CUT SPK E CB ALAMEDA ST W BARREL 22FT± E C/L 1FT± W OF TP NO 457450H 0.25MI± N OF DEL AMO BLVD	SY 2390A
BASELINE (1955)	34.332	CS MON IN WELL 2FT± N C/L DEL AMO BLVD @ APPROX C/L OF 2 SETS OF PERR TRACKS W ALAMEDA ST W BARREL MKD (COMP J-7 1942 RE 2177)	SY 2391A
BASELINE (1955)	38.192	L+T E CB 2FT± S OF END OF CB @ SE COR ALAMEDA ST W BARREL + DEL AMO BLVD 4FT± N TP NO 427134H 65FT± S + 22FT± E C/L INT	SY 2392A
BASELINE (1955)	33.128	L+SPK E CB ALAMEDA ST W BARREL 22FT± E C/L 48FT± N PP NO 577434 1400FT± S DEL AMO BLVD	SY 2393A
BASELINE (1955)	32.557	L+BN E CB ALAMEDA ST W BARREL 22FT± E C/L 23FT± PP NO 577803R 900FT± N OF DOMINGUEZ ST	SY 2394A
BASELINE (1955)	33.488	L+BN S CB TRAFFIC ISLAND @ NW COR ALAMEDA ST + DOMINGUEZ ST (HALF WAY BETWEEN SPRR + PERR)	SY 2395A
BASELINE (1955)	30.235	L+T W CB ALAMEDA ST C/L PROD HARRISON ST	SY 2396A
BASELINE (1955)	29.273	L+BN W CB ALAMEDA ST C/L PROD JACKSON ST	SY 2397A
BASELINE (1955)	28.474	L+BN W CB ALAMEDA ST C/L PROD MADISON ST	SY 2398A
BASELINE (1955)	27.599	L+BN W CB ALAMEDA ST C/L PROD ADAMS ST	SY 2399A
BASELINE (1955)	27.278	L+BN W CB 4FT± N OF END OF CB @ NW COR ALAMEDA ST + CARSON ST	SY 2400A
BASELINE (1955)	27.454	SO SPK W CB 3FT± S OF END OF CB @ SW COR ALAMEDA ST + CARSON ST	SY 2401A
BASELINE (1955)	25.801	L+BN W CB ALAMEDA ST 22FT± W C/L 1200FT± S C/L OF CARSON ST	SY 2402A
BASELINE (1955)	24.577	L+BN W CB ALAMEDA ST 22FT± W C/L 650FT± N C/L 223RD ST 206FT± N C/L SAN DIEGO FWY UNDERPASS	SY 2403A
BASELINE (1955)	22.627	OUT USGS STD DISC SW COR CONC VALVE BOX SO CALIF GAS CO 2FT± W OF W CB ALAMEDA ST 25FT± W C/L 140FT± S C/L 223RD ST MKD (R 615 1941)	SY 2404A
BASELINE (1955)	20.534	L+BN W CB ALAMEDA ST 1126FT± S 223RD ST	SY 2405A
BASELINE (1955)	18.111	L+BN W CB ALAMEDA ST 22FT± W C/L 150FT± N PERR STA + 200FT± S DRWY TO PUBLIC DUMP NO 22746 ALAMEDA ST	SY 2406A
BASELINE (1955)	19.728	CSBN MON IN WELL 1FT± W OF W CB ALAMEDA ST 23FT± W C/L 34FT± N OF N END CONC BRIDGE OVER DOMINGUEZ CHANNEL 0.5MI± N SEPULVEDA BLVD MKD (BM 5-40A 1960 RE 5869)	SY 2407A
BASELINE (1955)	18.012	FC MON 4FT± E OF E CB ALAMEDA ST 44FT± E C/L @ SE COR BRIDGE NO 1113 OVER DOMINGUEZ CHANNEL 0.5MI± N SEPULVEDA BLVD MKD (111-93 1960)	SY 2408A
BASELINE (1955)	18.012	L+BN E CB ALAMEDA ST 40FT E C/L 450FT± S DRWY TO THE (HANCOCK CHEMICAL BLAT) 2FT± S PP NO 1108824E 0.3MI± N SEPULVEDA BLVD	SY 2409A

JUL 1964

LOS ANGELES COUNTY ROAD DEPARTMENT
SURVEY SECTION FIELD ENGINEERING DIVISION

PAGE 9

QUAD-YEAR	ELEV	D E S C R I P T I O N (INCLUDE QUAD AND YEAR IN DESCRIPTION)	BM NUMBER
BASELINE (1955)	19.127	L+BN W CB ALAMEDA ST 22FT± W C/L 64FT± N PP NO 1353725E 128CFT± S SEPULVEDA BLVD	SY 2410A
BASELINE (1955)	36.447	RDBM MON 5IN DN 1FT± W OF W CB ALAMEDA ST 23FT± W C/L 13FT± N LAC BDRY 0.5MI± S SEPULVEDA BLVD MKD (BM NO 1)	SY 2411A
BASELINE (1955)	36.715	L+BN W CB ALAMEDA ST 22FT± W C/L 60FT± N CB END 59FT± S PP NO 1353742E 0.5MI± S SEPULVEDA BLVD	SY 2412A
BASELINE (1955)	36.807	L+SPK W CB ALAMEDA ST 22FT± W C/L 5FT± N OF END OF CB 12FT± N LAC BDRY 0.5MI± S SEPULVEDA BLVD	SY 2413A
BASELINE (1955)	70.370	L+T CTR CB RET @ SE COR ROSECRANS AVE + ALAMEDA ST E BARREL	SY 2419A
GARDENA (1960)	33.112	L+BR SCREW W CB NORMANDIE AVE 62FT± S C/L 168TH ST PROD TO THE E 2FT N OF END OF CB	SY 3014
GARDENA (1960)	33.419	L+T @ NW COR LOADING PLATFORM DAIRY BLDG 125FT± S HSE NO 16940 NORMANDIE AVE 75FT± E C/L	SY 3015
GARDENA (1960)	35.226	L+BN CONC FOUNDATION NE LEG EDISON TRANSMISSION TOWER NO M71T4 1200FT± S 174TH ST + 175FT± W NORMANDIE AVE 115FT± W OF W RAIL PERR	SY 3018
GARDENA (1960)	37.761	L+T NE COR CONC SLAB FRONT OF STEPS TO HSE NO 17725 NORMANDIE AVE 100FT N C/L 178TH ST 120FT W C/L NORMANDIE AVE 65FT± W OF W RAIL PERR	SY 3019
GARDENA (1960)	41.324	BR SCREW SE SIDE CONC WK HSE NO 17907 NORMANDIE AVE 105FT± W C/L + 45FT± S C/L 179TH ST 15FT± SW OF END OF WK	SY 3020
GARDENA (1960)	45.343	L+T CB NORMANDIE AVE 4FT± S BCR SW COR 182ND ST + NORMANDIE AVE	SY 3021
GARDENA (1960)	44.493	L+SPK W CB NORMANDIE AVE 1FT± S OF S FENCE LINE PRGD W ROOSEVELT MEMORIAL PARK 640FT± S 182ND ST	SY 3022
GARDENA (1960)	45.328	L+SPK W CB NORMANDIE AVE 45FT± N C/L 186TH ST 20FT± N OF END OF CONC @ NW COR 186TH ST + NORMANDIE AVE	SY 3023
GARDENA (1960)	46.115	L+BN W CB CPP S FENCE LINE PROD W HSE NO 18730 186TH ST	SY 3024
GARDENA (1960)	46.613	LACE MON @ C/L INT NORMANDIE AVE + 190TH ST	SY 3025
GARDENA (1960)	48.383	L+T W CB 5FT± S BCR @ SW COR NORMANDIE AVE + 190TH ST	SY 3026
GARDENA (1960)	47.972	L+BN W CB NORMANDIE AVE 900FT± S 190TH ST CPP TP NO C46958T	SY 3027
GARDENA (1960)	47.857	L+T W CB NORMANDIE AVE C/L PROD KNOX ST TO THE E	SY 3028
GARDENA (1960)	47.659	USC+GS STD DISC IN CONC FLUSH 105FT± S C/L PROD KNOX ST 2FT± W OF W CB NORMANDIE AVE 17FT± E OF E RAIL PERR	SY 3030
GARDENA (1960)	46.865	L+BN W CB NORMANDIE AVE 100FT± S OF S SIDE CI BLDG NO 19730 PROD 1100FT± S KNOX ST	SY 3031
GARDENA (1960)	45.749	LACE MON @ C/L INT NORMANDIE AVE + FRANCISCO ST 150CFT± S KNOX ST	SY 3032

JUL 1964

LOS ANGELES COUNTY ROAD DEPARTMENT
SURVEY SECTION FIELD ENGINEERING DIVISION

PAGE 10

QUAD-YEAR	ELEV	DESCRIPTION (INCLUDE QUAD AND YEAR IN DESCRIPTION)	BM NUMBER
GARDENA (1960)	42.163	CS STD DISC IN CONC 24IN DN 35FT± W OF W CB NORMANDIE AVE 70FT± N C/L OF POWER LINE 619FT± N MAPLE ST	SY 3033
GARDENA (1960)	41.926	USGS STD DISC IN CONC FLUSH 3FT± W OF W CB NORMANDIE AVE 94FT± S C/L POWER LINE 455FT± N MAPLE ST	SY 3034
GARDENA (1960)	41.122	L+T W CB NORMANDIE AVE CN C/L PROD MILTON ST	SY 3036
GARDENA (1960)	41.035	LACE MON 2FT± W OF W CB NORMANDIE AVE 40FT± S C/L MILTON ST PROD @ LEVEL OF CB	SY 3037
GARDENA (1960)	37.702	LACE MON @ C/L INT NORMANDIE AVE + 208TH ST	SY 3038
GARDENA (1960)	43.106	L+T W CB NORMANDIE AVE 70FT± S C/L PROD 209TH ST	SY 3039
GARDENA (1960)	36.257	L+T W CB NORMANDIE AVE 95FT± S DRWY TO BLDG NO 21000	SY 3040
GARDENA (1960)	35.660	LACE MON @ C/L INT 211TH ST + NORMANDIE AVE 95FT± S DRWY BLDG NO 21000 NORMANDIE AVE	SY 3041
GARDENA (1960)	32.483	USG+GS STD DISC IN CONC POST 2FT± W OF W CB NORMANDIE AVE 136FT± S 212TH ST MKD (R 780)	SY 3042
GARDENA (1960)	36.136	RDBM TAG W CB SERVICE IS 1FT± N BCR NE COR NORMANDIE AVE + LEVINSON ST 35FT± N + 30FT± E C/L INT	SY 3043A
GARDENA (1960)	37.865	RDBM TAG W CB SERVICE ISLE SE COR NORMANDIE AVE + LEVINSON ST 60FT S + 30FT E C/L INT	SY 3044B
GARDENA (1960)	40.095	LACE MON C/L NORMANDIE AVE 600FT± N CARSON ST	SY 3045
GARDENA (1960)	41.373	L+T W CB NORMANDIE AVE OPP PP NO 279322E 4TH PP N CARSON ST	SY 3046
GARDENA (1960)	46.257	RDBM MON 2IN DN 2FT W OF CB NORMANDIE AVE + 115FT S CARSON ST MKD (BM 49)	SY 3047A
GARDENA (1960)	45.321	L+BN W CB NORMANDIE AVE 2FT± S PP NO 279329 200FT± S 218TH ST	SY 3048
GARDENA (1960)	44.261	L+BN W CB 3FT± S OF END OF CB 70FT± S C/L 220TH ST 33FT± W C/L NORMANDIE AVE	SY 3049
GARDENA (1960)	44.460	LACE MON @ C/L NORMANDIE AVE 221ST ST PROD E FRONT HSE NO 22042 NORMANDIE AVE	SY 3050
GARDENA (1960)	45.221	L+SPK W CB NORMANDIE AVE C/L PROD 221ST ST PROD E	SY 3051
GARDENA (1960)	45.930	L+BN SW COR CULV HDWL 30FT± E C/L NORMANDIE AVE 21FT± S C/L 223RD ST	SY 3052
GARDENA (1960)	45.886	LACE MON @ PI OF 1ST CURVE S 223RD ST OPP HSE NO 22424 NORMANDIE AVE	SY 3053
GARDENA (1960)	46.789	LACE MON 2FT± W OF W CB NORMANDIE AVE 75FT± N C/L PROD 225TH ST	SY 3054
GARDENA (1960)	47.258	L+T W CB NORMANDIE AVE 30FT± W C/L BC NORMANDIE AVE OPP BLDG NO 22630	SY 3055

JUL 1964

LCS ANGELES COUNTY ROAD DEPARTMENT
 SURVEY SECTION FIELD ENGINEERING DIVISION

PAGE 11

QUAD-YEAR	ELEV	DESCRIPTION (INCLUDE QUAD AND YEAR IN DESCRIPTION)	BM NUMBER
GARDENA (1960)	55.128	LACE STD DISC IN CONC POST 6IN UP 2FT± W OF W CB SY NORMANDIE AVE 26FT± N PP NO 279372 915FT± N SEPULVEDA BLVD	3056
GARDENA (1960)	57.752	LACE MON DN C/L SEPULVEDA BLVD TO THE W + 40FT± E OF W CB NORMANDIE AVE	3057
GARDENA (1960)	57.378	L+T W CB 25FT± S BC COR NORMANDIE AVE + SEPULVEDA BLVD	3058
GARDENA (1960)	57.450	L+BN W SIDE CONC BOX FOR METRO WATER CO 65FT± E OF W CB NORMANDIE AVE 12FT± E OF E EDGE CONC PVMT 640FT± S SEPULVEDA BLVD	3059
GARDENA (1960)	48.873	L+SCREW W CB NORMANDIE AVE 38FT± N C/L DRWY PROD SY TO SUPERIOR OIL CO 800FT± N SANTA FE RR UNDERPASS	3060
GARDENA (1960)	38.629	STD DISC 1FT± S TO NE COR OF CTR ABUT OF SANTA FE RR @ NORMANDIE AVE 0.5MI± S SEPULVEDA BLVD	SY 3061
GARDENA (1960)	35.395	LACE DISC 3FT± E OF SE COR OF CTR ABUT SANTA FE RR UNDERPASS @ NORMANDIE AVE 0.5MI± S SEPULVEDA BLVD	SY 3062
GARDENA (1960)	63.531	SPK IN 6IN IP + CONC PLUG 3FT± W OF W CB NORMANDIE AVE CPP BC 1650FT± S OF AT+SF OVERPASS 0.7MI± S SEPULVEDA BLVD CPP N POWER LINE OF 24500 NORMANDIE AVE 2FT± SW GUY POLE NO 441422H	SY 3063
GARDENA (1960)	62.302	LACE MON C/L NORMANDIE AVE @ BC N POWER LINE OF NO 24500 NORMANDIE AVE 1650FT± S OF AT+SFRR OVERPASS 0.7MI± S SEPULVEDA BLVD	SY 3064
GARDENA (1960)	62.980	L+BN NW COR CONC SLAB W SIDE OIL DERRICK (RING OIL CO HAWKINS NO 5) 65FT± E C/L NORMANDIE AVE + 800FT± N LOMITA RD	SY 3065
BASELINE (1955)	68.227	LACE MON C/L INT LOMITA BLVD + NORMANDIE AVE	SY 3066A
BASELINE (1955)	69.517	LACE MON 2FT± W OF CB NORMANDIE AVE 19FT± S CB RET @ SW COR NORMANDIE AVE + LOMITA BLVD	SY 3067
BASELINE (1955)	69.153	USGS MON 2FT± S CB 9FT± W CB RET @ SE COR LOMITA BLVD + NORMANDIE AVE FLUSH	SY 3068
BASELINE (1955)	58.722	L+BN E END OF CB PARKING AREA 1FT± S CB RET 38FT S C/L LOMITA BLVD 25FT W OF NE COR BLDG NO 1040 LOMITA BLVD 135FT W C/L PETROLEUM AVE	SY 3069A
BASELINE (1955)	35.969	L+SPK N CB LOMITA BLVD 5FT± W CB RET @ NW COR LOMITA BLVD + VERMONT AVE	SY 3070A
BASELINE (1955)	33.103	SO HD SPK NR CTR CB RET NE COR LOMITA BLVD + VERMONT AVE	SY 3071A
BASELINE (1955)	32.957	BR CAP IN WELL @ C/L INT LOMITA BLVD + VERMONT AVE MKD (1ST ORDER SURVEY MARK - BUREAU OF ENG DIV OF SURVEYS - DEPT OF PUBLIC WORKS 1955, WILMINGTON B-1)	SY 3072A
BASELINE (1955)	29.410	CHIS X W SIDE BELL TEL MH 20FT± S C/L LOMITA BLVD + 600FT± W FIGUEROA ST	SY 3073A
BASELINE (1955)	35.514	CS MON IN WELL C/L FIGUEROA ST 20FT N C/L LOMITA BLVD (TO E)	SY 3074A
BASELINE (1955)	34.455	L+T E CB FIGUEROA ST 140FT± S C/L LOMITA BLVD TO THE E	SY 3075A

QUAD-YEAR	ELEV	DESCRIPTION (INCLUDE QUAD AND YEAR IN DESCRIPTION)	BM NUMBER
BASELINE (1955)	37.466	LACE MON @ C/L INT LOMITA BLVD + EUDORA AVE	SY 3076A
BASELINE (1955)	36.920	L+SPK E CB 3FT± S OF END OF CB 30FT± S C/L LOMITA BLVD @ SE COR LOMITA BLVD + EUDORA AVE	SY 3077A
BASELINE (1955)	30.523	L+T E CB 4FT± S OF END OF CB 30FT± S C/L LOMITA BLVD @ SE COR LOMITA BLVD + VAN TRESS AVE	SY 3078A
BASELINE (1955)	36.912	LACE MON @ C/L INT LOMITA BLVD + FRIGATE AVE	SY 3079A
BASELINE (1955)	40.752	SQ HD SPK W CB 15FT± S OF END OF CB 35FT± S C/L LOMITA BLVD @ SW COR WILMINGTON BLVD (MAIN ST TO THE N) + LOMITA BLVD	SY 3080A
BASELINE (1955)	39.933	LACE MON @ C/L INT WILMINGTON BLVD (MAIN ST TO THE N) + LOMITA BLVD	SY 3081A
BASELINE (1955)	41.026	L+T E CB 7FT± S OF END OF CB 27FT± S C/L LOMITA BLVD @ SE COR WILMINGTON BLVD + LOMITA BLVD	SY 3082A
BASELINE (1955)	41.075	LACE MON @ C/L INT LOMITA BLVD + GULF AVE	SY 3083A
BASELINE (1955)	41.882	L+T W CB GULF AVE 75FT± S C/L LOMITA BLVD 1FT± S OF CONC DRWY TO HSE NO 1752	SY 3084A
BASELINE (1955)	42.222	L+SPK W CB 5FT± S BCR @ SW COR BAY VIEW AVE + LOMITA BLVD 70FT± S LOMITA BLVD	SY 3085A
BASELINE (1955)	42.199	L+T E CB 70FT± S C/L LOMITA BLVD 7FT± N OF N EDGE OF DRWY TO HSE NO 1752 BAY VIEW AVE FRONT PP NO 54425E	SY 3086A
BASELINE (1955)	41.862	LACE MON C/L INT LOMITA BLVD + NEPTUNE AVE	SY 3087A
BASELINE (1955)	43.003	WIRE SPK W CB 33FT± S C/L LOMITA BLVD 3FT± S OF END OF CB @ SW COR NEPTUNE AVE + LOMITA BLVD	SY 3088A
BASELINE (1955)	42.555	WIRE SPK W CB 33FT± S C/L LOMITA BLVD 3FT± S OF END OF CB @ SW COR RAVENNA AVE + LOMITA BLVD	SY 3089A
BASELINE (1955)	42.404	L+SPK W CB 35FT± S C/L LOMITA BLVD 3FT± S OF END OF CB @ SW COR OF LAGOON AVE + LOMITA BLVD	SY 3090A
BASELINE (1955)	41.691	LACE MON C/L INT ISLAND AVE + LOMITA BLVD	SY 3091A
BASELINE (1955)	42.857	LACE MON C/L INT MARINE AVE + LOMITA BLVD	SY 3092A
BASELINE (1955)	42.810	L+SPK W CB MARINE AVE 34FT± S C/L LOMITA BLVD 4FT± S OF END OF CB	SY 3093A
BASELINE (1955)	43.805	LACE MON @ C/L INT AVALON BLVD + LOMITA BLVD	SY 3094A
GARDENA (1960)	41.332	L+BN E CB AVALON BLVD 45FT± N C/L AT+SFRR WILMINGTON LINE 2FT± N CATCH BASIN 700FT± N 246TH ST	SY 3095
GARDENA (1960)	37.453	L+SPK NE COR CONC APRON TO GAS STA NO 24101 AVALON BLVD 45FT± W + 25FT± S C/L INT AVALON BLVD + PACIFIC ST MKD (LH 7)	SY 3096
GARDENA (1960)	37.077	L+T @ C/L INT LINCOLN ST + AVALON BLVD	SY 3097

JUL 1964

LOS ANGELES COUNTY ROAD DEPARTMENT
SURVEY SECTION FIELD ENGINEERING DIVISION

PAGE 13

QUAD-YEAR	ELEV	DESCRIPTION (INCLUDE QUAD AND YEAR IN DESCRIPTION)	BM NUMBER
GARDENA (1960)	39.429	L+T CTR 1.5FT CONC CB AROUND SAS OUT SIGN 47FT± S + 55FT± E C/L INT AVALON BLVD SEPULVEDA BLVD	SY 3098
GARDENA (1960)	37.675	LACE MON FLUSH 80FT± N + 34FT± OUT INT SEPULVEDA BLVD + AVALON BLVD MKD (37H)	SY 3099
GARDENA (1960)	38.012	L+BN AVALON BLVD (E CB OF PKWY) @ CTR CROSS DRAIN OPP HSE NO 23425	SY 3101
GARDENA (1960)	37.632	L+BN W CB AVALON BLVD (E CB OF PKWY) OPP C/L ALLEY BET HSE NO 23317 + NO 23307	SY 3102
GARDENA (1960)	36.461	L+SPK W CB AVALON BLVD (E CB OF PKWY) 2FT± N BCR @ NW COR BAYPORT ST	SY 3103
GARDENA (1960)	36.662	L+BN W CB AVALON BLVD (E CB PKWY) 3FT± S BCR @ SW COR ALLEY 800FT± N BAYPORT ST	SY 3104
GARDENA (1960)	36.554	L+T S CB 228TH ST 100FT± W C/L AVALON BLVD	SY 3105
GARDENA (1960)	36.572	L+T N CB 228TH ST 100FT± W C/L AVALON BLVD	SY 3106
GARDENA (1960)	36.895	CS MON IN WELL @ SW COR AVALON BLVD + BAYPORT ST 80FT± S + 40FT± W C/L INT MKD (BM 23 11)	SY 3107A
GARDENA (1960)	22.150	L+T SW COR CONC WK FRONT LAS PALMAS MARKET NO 21808 AVALON BLVD 4FT± W BLDG 58FT± E C/L AVALON BLVD 600FT± S CARSON ST	SY 3110
GARDENA (1960)	19.662	LACE MON IN WELL 10IN DN NW COR AVALON BLVD + CARSON ST NW C/L INT MKD (NO 39H)	SY 3111A
GARDENA (1960)	22.203	L+BN E SIDE OF CONC TRAFFIC SIGNAL FOUNDATION 25FT± N + 40FT± W C/L INT AVALON BLVD + CARSON ST	SY 3112
GARDENA (1960)	19.908	L+T SW COR CONC PLATFORM AROUND A PUBLIC SCALE @ NO 21508 AVALON BLVD 700FT± N CARSON ST	SY 3113A
GARDENA (1960)	14.713	L+BN CONC BASE 4IN IP 40FT± W C/L AVALON BLVD 25FT± S C/L 213TH ST	SY 3114A
GARDENA (1960)	18.185	L+BN CONC BASE NE LEG POWER TRANSMISSION TOWER NO 49 C/L AVALON BLVD 6TH TOWER S VICTORIA ST 150FT± S C/L 192ND ST	SY 3117
GARDENA (1960)	20.747	L+SPK E CB AVALON BLVD W BARREL 5FT± NW OF NW COR TOWER 48 5TH TOWER S VICTORIA ST 287FT± S C/L 189TH ST	SY 3118
GARDENA (1960)	18.977	CS MON IN WELL 8 IN DN 15FT± W C/L TOWER NO 48 AVALON BLVD 295FT S C/L 189TH ST	SY 3119A
GARDENA (1960)	23.678	L+SPK CONC BASE NE LEG POWER TRANSMISSION TOWER NO 46 C/L AVALON BLVD 200FT± S 184TH ST	SY 3120
GARDENA (1960)	33.631	L+BN CONC BASE NW LEG POWER TRANSMISSION TOWER NO 45FT± C/L AVALON BLVD 200FT± S C/L 182ND ST	SY 3121
GARDENA (1960)	45.570	L+T CONC BASE NE LEG POWER TRANSMISSION TOWER NO 44 C/L AVALON BLVD 70FT± S C/L VICTORIA ST	SY 3122
GARDENA (1960)	48.153	L+SPK CONC BASE NE LEG POWER TRANSMISSION TOWER NO 43 C/L AVALON BLVD 1ST POLE N OF VICTORIA ST	SY 3123
GARDENA (1960)	42.502	L+T CONC BASE NE LEG POWER TRANSMISSION TOWER NO 41 C/L AVALON BLVD 1ST TOWER S OF ARTESIA BLVD	SY 3125

QUAD-YEAR	ELEV	DESCRIPTION (INCLUDE QUAD AND YEAR IN DESCRIPTION)	BM NUMBER
GARDENA (1960)	43.151	L+BN CONC HDWL 53FT± S C/L ARTESIA BLVD + 200FT± E C/L AVALON BLVD MKD (BM)	SY 3126A
GARDENA (1960)	49.678	L+SPK CONC BASE NE LEG POWER TRANSMISSION TOWER NO 40 C/L AVALON BLVD 1ST TOWER N OF ARTESIA BLVD	SY 3128
GARDENA (1960)	52.015	L+SPK CONC BASE SE LEG POWER TRANSMISSION TOWER NO 39 C/L AVALON BLVD 2ND TOWER N OF ARTESIA BLVD	SY 3129
GARDENA (1960)	47.598	L+T CONC BASE NE LEG POWER TRANSMISSION TOWER NO 38 C/L AVALON BLVD 3RD TOWER N OF ARTESIA BLVD	SY 3130
GARDENA (1960)	55.052	L+BN CONC BASE NE LEG POWER TRANSMISSION TOWER NO M 5 T 2 110FT± W C/L AVALON BLVD 400FT N DOUBLE DR	SY 3131
GARDENA (1960)	54.357	L+T SE COR CONC WK @ S SIDE BLDG NO 16431 AVALON BLVD 48FT± W C/L AVALON BLVD 31FT± N C/L 165TH ST 2FT± E OF SE COR OF BLDG	SY 3132
GARDENA (1960)	57.054	L+T N CB 13FT± E BCR @ NW COR ALONDRA BLVD 42FT± N + 61FT± W C/L INT	SY 3133A
GARDENA (1960)	68.248	L+BN CONC FOUNDATION SHEET METAL BLDG 73FT± W C/L AVALON BLVD + 5FT± S C/L FUTURE 157TH ST MKD (BM)	SY 3134A
GARDENA (1960)	69.742	L+BN CONC BASE 55FT± E C/L AVALON BLVD + 25FT± N C/L 157TH ST PROD E FROM SAN PEDRO ST	SY 3135
GARDENA (1960)	74.761	L+BN W CB AVALON BLVD 1FT± N BCR @ NW COR 154TH ST + AVALON BLVD	SY 3136
GARDENA (1960)	79.517	SO HD N CB 42FT W BCR @ NW COR AVALON BLVD + REDONDO BEACH BLVD 40FT N + 122FT W C/L INT MKD (ZA 34)	SY 3137A
GARDENA (1960)	79.932	CS MON IN WELL NE COR AVALON BLVD + REDONDO BEACH BLVD 94FT± N + 11FT± E C/L INT MKD (BM 23-1)	SY 3138A
GARDENA (1960)	88.711	L+WIRE SPK W CB 4FT N BCR @ NW COR AVALON BLVD + COMPTON BLVD 40FT W + 73FT N C/L INT	SY 3139A
GARDENA (1960)	95.307	L+BN E CB AVALON BLVD 40FT W C/L + 1000FT N COMPTON BLVD NR ENT TO PIPE YD OF NO 14815 MKD (BM)	SY 3140A
GARDENA (1960)	95.975	L+BN E CB AVALON BLVD 40FT E C/L + 1000FT N COMPTON BLVD NR CTR STORAGE YD OF NO 14800 MKD (BM)	SY 3141A
GARDENA (1960)	104.833	L+PK CONC BASE TO SW COR FENCE POST 50FT± E C/L AVALON BLVD + 500FT± S ROSECRANS AVE	SY 3142
BASELINE (1955)	69.627	HEX DRILL IN WELL @ C/L INT LOMITA BLVD + BELLE PORTE AVE	SY 3502A
BASELINE (1955)	49.049	HEX DRILL STEEL IN WELL C/L PRESIDENT AVE + 15FT± S C/L LOMITA BLVD	SY 3505A
BASELINE (1955)	49.943	BR CAP IN WELL C/L WESTERN AVE 15FT± S C/L LOMITA BLVD MKD (1ST ORDER SURVEY MARK BUREAU OF ENG DIV OF SURVEYS, DEPT OF PUBLIC WORKS 1954 SAN PEDRO HILLS P-1)	SY 3508A

QUAD-YEAR	ELEV	DESCRIPTION (INCLUDE QUAD AND YEAR IN DESCRIPTION)	BM NUMBER
BASELINE (1955)	51.296	FLT HD SPK W CB WESTERN AVE 4FT± S CB RET @ SW COR LOMITA BLVD 38FT± W + 60FT± S C/L INT	SY 3509A
BASELINE (1955)	55.975	L+T N EDGE CONC APRON IN FRONT OF GARAGE 40FT± SE C/L EBONY LANE 95FT± S C/L LOMITA BLVD	SY 3510A
BASELINE (1955)	53.466	L+T NE COR CONC WK TO HSE NO 1854 LOMITA BLVD 60FT± S C/L LOMITA BLVD	SY 3512A
BASELINE (1955)	56.267	CS MON IN WELL @ C/L INT LOMITA BLVD + WALNUT AVE	SY 3513A
BASELINE (1955)	65.059	L+T W EDGE CONC WK TO FRONT OF BLDG NO 1978 LOMITA BLVD 45FT± E C/L ESHELMAN AVE 60FT± S C/L LOMITA BLVD	SY 3515A
BASELINE (1955)	64.303	CS MON IN WELL @ C/L INT LOMITA BLVD + ESHELMAN AVE	SY 3516A
BASELINE (1955)	69.233	L+T W CB OAK ST 3FT± S CB RET @ SW COR OAK ST + LOMITA BLVD	SY 3518A
BASELINE (1955)	69.508	L+BN S CB LOMITA BLVD 1FT± E CB RET @ SE COR WOODWARD AVE + LOMITA BLVD	SY 3519A
BASELINE (1955)	70.093	L+BN 1FT± W CB RET @ NW COR LOMITA BLVD + NARBONNE AVE	SY 3520A
BASELINE (1955)	70.566	L+T S CB LOMITA BLVD 30FT± W CB RET @ SW COR NARBONNE AVE + LOMITA BLVD	SY 3521A
BASELINE (1955)	64.654	L+T E CB NARBONNE AVE 7FT± N CB RET @ NE COR 248TH ST 24FT± E + 37FT± N C/L INT	SY 3522A
BASELINE (1955)	68.697	L+BN E CB NARBONNE AVE 1FT± N CB RET @ NE COR NARBONNE AVE + 250TH ST	SY 3523A
BASELINE (1955)	78.117	L+BN E CB NARBONNE AVE 2FT± N DRWY TO HSE NO 25122 NARBONNE AVE	SY 3524A
BASELINE (1955)	92.439	L+T E CB NARBONNE AVE 2FT± S DRWY TO HSE NO 25342 105FT± S C/L 253RD PL	SY 3525A
BASELINE (1955)	101.849	L+BN E CB NARBONNE AVE 2FT N CN RET @ NE COR NARBONNE AVE + 255TH ST	SY 3526A
BASELINE (1955)	109.153	L+BN E CB NARBONNE AVE 4FT± N CB RET @ NE COR NARBONNE AVE + 256TH ST	SY 3527A
BASELINE (1955)	119.735	L+BN E CB NARBONNE AVE 1FT± N CB RET @ NE COR NARBONNE AVE + PACIFIC COAST HWY	SY 3528A
BASELINE (1955)	121.518	L+BN N CB PACIFIC COAST HWY 5FT± W CB RET @ NW COR PACIFIC COAST HWY + NARBONNE AVE	SY 3529A
BASELINE (1955)	131.649	L+N N CB PACIFIC COAST HWY 5FT± W CB RET @ NW COR PACIFIC COAST HWY + CYPRESS ST	SY 3530A
BASELINE (1955)	135.542	L+PN S CB PACIFIC COAST HWY 38FT S C/L + 215FT± W C/L CYPRESS ST MKD (BM)	SY 3531B
BASELINE (1955)	61.651	LACE MON C/L INT ROSECRANS AVE + VERMONT AVE E BARREL MKD (TRAV STA WATTS B 12 1946)	SY 3534
BASELINE (1955)	60.720	L+T W CB 5FT± S BCR @ SW COR VERMONT AVE + ROSECRANS AVE 60FT± S C/L ROSECRANS + 18FT± W OF W BARREL	SY 3536A
BASELINE (1955)	55.817	L+T E CB BERENDO AVE 5FT± S OF END OF CB 60FT± S C/L ROSECRANS AVE	SY 3537A

QUAD-YEAR	ELEV	DESCRIPTION (INCLUDE QUAD AND YEAR IN DESCRIPTION)	BM NUMBER
BASELINE (1955)	52.321	L+BR S CB ROSECRANS AVE 5FT E OF END CB @ W END CATCH BASIN + 25FT S + 60FT E C/L INT BUDLONG AVE + ROSECRANS AVE MKD (BM)	SY 3538A
BASELINE (1955)	51.802	L+BR W CB BUDLONG AVE 12FT S END OF CB 18FT W + 60FT S C/L INT OF BUDLONG AVE + ROSECRANS AVE MKD (BM)	SY 3539A
BASELINE (1955)	47.621	L+BR E CB NORMANDIE AVE 10FT S OF END CB 30FT E + 60FT S C/L INT NORMANDIE AVE + ROSECRANS AVE MKD (BM)	SY 3540A
BASELINE (1955)	46.417	CS MON 54FT± S C/L ROSECRANS AVE + 26FT± W C/L NORMANDIE AVE MKD (BM 21 8 1952 RE 63)	SY 3541A
BASELINE (1955)	47.513	L+T NW COR CONC WK TO COURT 50FT S C/L ROSECRANS AVE 65FT± E C/L HALLDALE AVE	SY 3542A
BASELINE (1955)	47.695	L+T SE COR CONC BLDG NO 1639 ROSECRANS AVE 55FT± N C/L ROSECRANS AVE	SY 3544
BASELINE (1955)	47.350	L+BN W CB 4FT± S BCR 35FT± W C/L WESTERN AVE + 65FT± N C/L ROSECRANS AVE MKD (BM)	SY 3545A
BASELINE (1955)	45.201	L+T S CB 1FT± E BCR 40FT± E + 40FT± S C/L INT ROSECRANS AVE + GRAMERCY PL	SY 3547A
BASELINE (1955)	44.895	L+T W CB GRAMERCY PL 1FT S OF BCR 18FT W + 60FT S C/L INT ROSECRANS AVE + GRAMERCY PL	SY 3548A
BASELINE (1955)	45.343	RDBM TAG 7FT E BCR 40FT S + 75FT E C/L INT OF ROSECRANS AVE + VAN NESS AVE (IN S CB)	SY 3549A
BASELINE (1955)	46.484	RDBM TAG W CB VAN NESS AVE 5FT N BCR 30FT W + 68FT N C/L INT ROSECRANS AVE + VAN NESS AVE	SY 3550A
BASELINE (1955)	48.600	L+T E CB 1FT± S BCR @ SE COR WADKINS AVE + ROSECRANS AVE	SY 3553A
BASELINE (1955)	50.585	CS MON DN C/L CRENSHAW BLVD 45FT± N C/L ROSECRANS AVE	SY 3555
BASELINE (1955)	57.243	L+T 2FT± N BCR @ NE COR CRENSHAW BLVD + 190TH ST	SY 3606A
BASELINE (1955)	57.011	CS MON IN WELL 8IN DN @ NW COR 190TH ST + CRENSHAW BLVD 39FT± N + 150FT± W C/L INT MKD (CSBM 22-7A)	SY 3607A
BASELINE (1955)	56.379	L+SPK @ SW COR CRENSHAW BLVD + 189TH ST ⁶⁰ 30FT± S + 14FT± W C/L INT W SERVICE RD MKD (22-7B)	SY 3608A
GARDENA (1960)	61.899	LACE MON 11FT N C/L 190TH ST 11FT E C/L ARLING- TON AVE 1FT N OF EDGE OF PVMT	SY 3609
GARDENA (1960)	54.128	CS MON C/L 190TH ST 30FT± W C/L WESTERN AVE	SY 3612
GARDENA (1960)	51.988	RAM SET E EDGE CONC ISLAND CTR DRWY TO DOUGLAS PLANT 4FT± S OF N END OF ISLAND 75FT± S C/L 190TH ST 0.25MI± W NORMANDIE AVE	SY 3613
BASELINE (1955)	116.755	L+BN S EDGE CONC BASE OF SIGNAL LIGHTS 30FT N C/L ROSECRANS AVE + 55FT± W C/L BROADWAY	SY 3878A
BASELINE (1955)	114.357	RAM SET NW COR OF CONC BASE OF STOP SIGN 35FT± E C/L BROADWAY 70FT± S C/L ROSECRANS AVE	SY 3879A
GARDENA (1960)	102.554	L+BN IN CONC PVMT 14FT± E C/L BROADWAY 1100FT± S ROSECRANS AVE	SY 3880

QUAD-YEAR	ELEV	DESCRIPTION (INCLUDE QUAD AND YEAR IN DESCRIPTION)	BM NUMBER
GARDENA (1960)	91.987	L+BN @ NW COR WEIR BOX 60FT± E C/L BROADWAY 1500FT± S ROSECRANS AVE	SY 3881
GARDENA (1960)	71.149	L+T E EDGE CONC WK @ NE COR BLDG NO 15105 BROADWAY @ SW COR COMPTON BLVD + BROADWAY	SY 3882
GARDENA (1960)	52.672	LAC TRI MON IN WELL 10IN DN ON C/L REDONDO BEACH BLVD 13FT± W C/L BROADWAY	SY 3883A
GARDENA (1960)	54.623	SQ HD SPK 36FT E BCR @ SE COR BROADWAY + REDONDO BEACH BLVD 30FT± S + 120FT± E C/L INT MKD (TBM 54.64)	SY 3884A
GARDENA (1960)	47.088	L+N CTR CB RET @ NE COR 155TH STREET + BROADWAY	SY 3885
GARDENA (1960)	41.576	L+SPK CONC PVMT 14FT± W C/L INT 157TH ST + BROADWAY	SY 3886
GARDENA (1960)	41.924	L+T @ NE COR CONC SLAB @ ENT BLDG NO 15905 BROADWAY 110FT± W C/L BROADWAY	SY 3887
GARDENA (1960)	42.332	L+BN 2FT± W BCR @ NW COR BROADWAY + ALONDRA BLVD 40FT± N + 77FT± W C/L INT MKD (BM)	SY 3888A
GARDENA (1960)	41.789	LACE MON IN WELL C/L ALONDRA BLVD + 12FT± W C/L BROADWAY	SY 3889A
GARDENA (1960)	43.394	L+T S EDGE CONC TO HSE NO 16309 BROADWAY 52FT± W C/L BROADWAY	SY 3890
GARDENA (1960)	40.619	L+SPK CONC PVMT 14FT W C/L INT 165TH ST + BROADWAY	SY 3891
GARDENA (1960)	37.296	L+BN NW COR CONC BASE PHONE BOOTH 50FT± E C/L BROADWAY + 45FT± N C/L 168TH ST	SY 3892
GARDENA (1960)	30.737	L+T NE STRADDLER @ C/L INT WALNUT ST + BROADWAY	SY 3893
GARDENA (1960)	30.263	ROUND HD SPK 14FT± E C/L BROADWAY 60FT± S C/L WALNUT ST MKD (WX 12)	SY 3894
GARDENA (1960)	25.114	L+BN 1FT± N BCR @ NW COR ARTESIA BLVD + BROADWAY 70FT± N + 40FT± W C/L INT MKD (BM)	SY 3895A
GARDENA (1960)	24.025	RAM SET CONC PVMT 2FT± W C/L BROADWAY + 110FT± S C/L INT BROADWAY + 174TH ST MKD (BM 15 A 54)	SY 3896
GARDENA (1960)	23.538	L+T NE COR CONC PORCH @ ENT TO OFFICE NO 18001 BROADWAY 65FT± W C/L BROADWAY	SY 3897
GARDENA (1960)	21.881	LS TAG NO 1742 W CB BROADWAY 12FT± S BCR OF S DRWY TO (A + D MFG CO) @ NO 18037 BROADWAY	SY 3898
GARDENA (1960)	22.366	L+T CONC PVMT 2FT± SE OF EDGE OF PVMT 25FT± W C/L BROADWAY 25FT± N C/L VICTORIA ST	SY 3899
GARDENA (1960)	21.815	L+T IN CONC PVMT 2FT± NW OF EDGE OF PVMT 22FT± S C/L VICTORIA ST 22FT± E C/L BROADWAY	SY 3900
GARDENA (1960)	22.029	SPK CONC PVMT 14FT± E C/L INT GRIFFITH ST + BROADWAY	SY 3901
GARDENA (1960)	22.017	SPK CONC PVMT 14FT± W C/L INT GRIFFITH ST + BROADWAY	SY 3902
GARDENA (1960)	23.174	FC MON 6IN DN ON NE COR MAIN ST + BROADWAY 235FT N + 40FT E C/L INT 2IN IP MARKER 5FT E	SY 3903A

JUL 1964

LDS ANGELES COUNTY ROAD DEPARTMENT
 SURVEY SECTION FIELD ENGINEERING DIVISION

PAGE 18

QUAD-YEAR	ELEV	DESCRIPTION (INCLUDE QUAD AND YEAR IN DESCRIPTION)	BM NUMBER
GARDENA (1960)	22.822	FC TAG IN E CB OF S ISLE @ INT MAIN ST + BROADWAY ON C/L MAIN ST + 40FT E C/L BROADWAY	SY 3904A
GARDENA (1960)	20.777	SPK+L NW COR OF INT MAIN ST + FRANCISCO ST 24FT N + 19FT W C/L INT	SY 3906A
GARDENA (1960)	20.986	SPK + W C/L INT MAIN ST + FRANCISCO ST	SY 3907
GARDENA (1960)	22.641	RAM SET N SIDE CONC BASE NE LEG TOWER NO 32 60FT± W C/L MAIN ST 1ST TOWER S OF INT FRANCISCO ST	SY 3908
GARDENA (1960)	20.717	SPK+L NR W EDGE PVMT MAIN ST 18FT W C/L + 78FT N C/L 208TH ST	SY 3909A
GARDENA (1960)	21.004	L+BN S CB 208TH ST 18FT S C/L + 61FT E C/L MAIN ST MKD (BM)	SY 3910A
GARDENA (1960)	21.082	L+T CONC PVMT 19FT± W C/L INT DOMINGUEZ ST PROD + MAIN ST	SY 3911
GARDENA (1960)	21.583 21.583	L+BN N END GAS ISLAND @ 21002 MAIN ST 30FT± S C/L DOMINGUEZ ST 50FT± E C/L MAIN ST	SY 3912
GARDENA (1960)	OUT 21.93	L+T @ S END (OLD) GAS ISLAND @ 21216 MAIN ST 40FT± E C/L MAIN ST	SY 3913
GARDENA (1960)	28.118	L+T CONC PVMT 19FT± W C/L INT E 213TH ST + MAIN ST	SY 3914
GARDENA (1960)	27.955	L+BR W CB OF FUT NW COR MAIN ST + 213TH ST 55FT N + 40FT W C/L INT MKD (BM)	SY 3915A
GARDENA (1960)	30.110	L+T 19FT± E C/L INT MAIN ST + 214TH ST TO THE W	SY 3916
GARDENA (1960)	32.472	L+SPK CTR CB RET @ SE COR 215TH ST + MAIN ST	SY 3917
GARDENA (1960)	32.753	L+SPK 9FT± E BCR @ NE COR 216TH ST + MAIN ST	SY 3918
GARDENA (1960)	32.302	L+T 19FT± W C/L INT 216TH ST + MAIN ST	SY 3919
GARDENA (1960)	32.283	LACE MON NR C/L INT CARSON ST + MAIN ST	SY 3920
GARDENA (1960)	34.298	L+T SW COR CONC WK @ SW COR OF BLDG NO 21800 MAIN ST 45FT± E C/L MAIN ST + 75FT± S C/L 218TH ST	SY 3921
GARDENA (1960)	35.142	SPK CONC PVMT 11FT± W C/L MAIN ST 3FT± N C/L 220TH ST TO THE W	SY 3922
GARDENA (1960)	35.233	SPK CONC PVMT 11FT± E C/L MAIN ST 1FT± N C/L 220TH ST TO THE E	SY 3923
GARDENA (1960)	36.290	L+T N EDGE CONC WK @ NW COR BLDG NO 22138 MAIN ST 45FT± E C/L MAIN ST	SY 3924
GARDENA (1960)	35.732	SPK CONC PVMT 11FT± W C/L 223RD ST TO THE W + MAIN ST	SY 3925
GARDENA (1960)	35.618	L+T CONC PVMT 19FT± W C/L INT MAIN ST + 223RD ST PROD TO THE E	SY 3926
GARDENA (1960)	35.121	LACE MON CONC PVMT @ PI MAIN ST 2FTS8 E OF EDGE PVMT 500FT± S 223RD ST	SY 3927

JUL 1964

LOS ANGELES COUNTY ROAD DEPARTMENT
SURVEY SECTION FIELD ENGINEERING DIVISION

PAGE 19

QUAD-YEAR	ELEV	DESCRIPTION (INCLUDE QUAD AND YEAR IN DESCRIPTION)	BM NUMBER
GARDENA (1960)	37.485	CS TAG 6FT± N BCR @ SE COR MAIN ST + 228TH ST 50FT± S + 40FT± E C/L INT	SY 3928A
GARDENA (1960)	36.809	LACE MON 10FT± S C/L INT MAIN ST + 228TH ST TO THE W	SY 3929
GARDENA (1960)	37.354	L+BN 1FT± N BCR @ NE COR 229TH PL + MAIN ST SERVICE ROAD	SY 3930
GARDENA (1960)	36.609	L+BN 1FT± N BCR @ NE COR 231ST ST + MAIN ST SERVICE ROAD	SY 3931
GARDENA (1960)	35.977	L+BN 1FT± N BCR @ NE COR 232ND PL + MAIN ST SERVICE ROAD	SY 3932
GARDENA (1960)	35.488	L+BN 1FT± N BCR @ NE COR 234TH ST + MAIN ST SERVICE ROAD	SY 3933
GARDENA (1960)	36.533	L+BN 1FT± N BCR @ NE COR 235TH ST + MAIN ST SERVICE ROAD	SY 3934
GARDENA (1960)	38.770	L+BN 1FT± E BCR @ NE COR MAIN ST + GULF AVE	SY 3935
GARDENA (1960)	40.701	L+BN 1FT± S BCR @ NE COR MAIN ST + SEPULVEDA BLVD	SY 3936
GARDENA (1960)	40.930	LACE TAG N CB 5FT E BCR @ NW COR SEPULVEDA BLVD + MAIN ST 40FT N + 67FT W C/L INT	SY 3937A
GARDENA (1960)	39.262	L+BN CONC BASE OF 4IN IRON GATE POST ON S SIDE OF ENT TO AMERICAN CAN CO PARKING AREA 40FT± E C/L MAIN ST 800FT± S OF SEPULVEDA BLVD	SY 3938
GARDENA (1960)	36.723	L+BN E CB MAIN ST 20FT± N SANTA FE UNDERPASS 1FT± S END OF CB 1300FT± S SEPULVEDA BLVD	SY 3939
GARDENA (1960)	37.287	L+BN NE CONC SLAB 50FT± W C/L MAIN ST NR FLETCHER OIL CO SALES OFFICES	SY 3940
GARDENA (1960)	63.983	11IN IP 2IN DN PVMT ON C/L VICTORIA ST 30FT± SE PP NO 259109E 700FT± E AVALON BLVD	SY 3954
GARDENA (1960)	78.678	CS TRI MON NR C/L VICTORIA ST @ DRWY TO CARSON LEASE 1300FT± E AVALON BLVD MKD (COMPTON F4)	SY 3955
GARDENA (1960)	91.958	CHIS (X) @ ELBOW OF 6IN OIL PIPE LINE 60FT± S C/L VICTORIA ST 2200FT± E AVALON BLVD	SY 3956
GARDENA (1960)	101.663	L+BN SW COR CONC BASE OF GAS METER @ E SIDE DRWY TO DEEPWATER CHEMICAL CO 20FT± NW PP NO 259124E 35FT± N C/L VICTORIA ST	SY 3957
GARDENA (1960)	125.866	CHIS (X) @ ELBOW OF 6IN OIL PIPE LINE 27FT± S C/L VICTORIA ST 15FT W PP NO 842147E E OF DRWY TO UNION OIL CO 1000FT± W CENTRAL AVE	SY 3958
GARDENA (1960)	161.029	L+SPK NW COR CONC SLAB 65FT± E C/L CENTRAL AVE + 20FT± N C/L VICTORIA ST	SY 3959
GARDENA (1960)	172.887	L+BN @ NW COR CONC VALVE BOX 45FT S C/L + 15FT± E OFFICE BLDG NO 1408 VICTORIA ST	SY 3960
GARDENA (1960)	178.131	USC+GS BR CAP FLUSH 25FT± S C/L VICTORIA ST 4FT± W PP NO 842157E 0.3MI± W WILMINGTON AVE	SY 3961
GARDENA (1960)	169.339	CHIS (X) E SIDE OF RIM OF A MWD MH 15FT± S C/L VICTORIA ST 130FT± W PP NO 842160E 0.2MI± W WILMINGTON AVE	SY 3962

QUAD-YEAR	ELEV	DESCRIPTION (INCLUDE QUAD AND YEAR IN DESCRIPTION)	BM NUMBER
GARDENA (1960)	157.546	CS MON C/L VICTORIA ST 22FT± E C/L WILMINGTON AVE	SY 3964
GARDENA (1960)	188.886	L+SPK PVMT 19FT± W C/L WILMINGTON AVE 2175FT± S C/L VICTORIA ST 75FT± S OF TP NO 549556H	SY 3965
GARDENA (1960)	148.938	L+BN S SIDE EDGE OF CATCH BASIN 26FT± W C/L WILMINGTON AVE 50FT± S OF TP NO 549571 0.7MI± S VICTORIA ST OPP ENT ROAD TO UNION OIL CO	SY 3967
GARDENA (1960)	147.742	CONC MON + SPK 35FT± W C/L WILMINGTON AVE S SIDE OF DIRT DRWY TO NO 19211 WILMINGTON AVE 15FT± S TP NO 549573H	SY 3968
GARDENA (1960)	145.816	L+SPK PVMT 19FT± W C/L WILMINGTON AVE 20FT± SE TP NO 549573H 0.8MI± S VICTORIA ST	SY 3969
GARDENA (1960)	118.693	L+BN E CB WILMINGTON AVE @ N END OF CB 50FT± S DRWY TO HSE NO 19324	SY 3970
GARDENA (1960)	100.729	L+BN E CB WILMINGTON AVE @ S END OF CB NE OF HSE NO 19511	SY 3971
GARDENA (1960)	44.037	USE+GS BR CAP FLUSH 35FT± W C/L WILMINGTON AVE 65FT± N DRWY HSE NO 20117 MKD (N 780 1946)	SY 3972
GARDENA (1960)	25.918	L+BN NW COR CONC BASE OF BRICK GATEWAY ON S SIDE OF ENT TO NO 20720 WILMINGTON AVE 33FT± E C/L	SY 3974
GARDENA (1960)	25.179	L+BN @ S END OF CONC SLAB @ DRWY TO NO 21136 WILMINGTON AVE 33FT± E C/L	SY 3975
GARDENA (1960)	25.136	L+BN W SIDE CONC BASE LIGHT SIGNAL @ NE COR CARSON ST + WILMINGTON AVE	SY 3976
GARDENA (1960)	22.747	L+BN SW COR CONC HDWL OF CULV 27FT± E C/L WILMINGTON AVE 95FT± N OF HSE NO 21908	SY 3977
GARDENA (1960)	32.513	RICHFIELD OIL CO MON W/BR CAP ON FENCE LINE 30FT E C/L WILMINGTON AVE 85FT± N TP NO 549708H 0.7MI± S OF 223RD ST	SY 3981
GARDENA (1960)	33.431	CHIS (X) E EDGE MH RIM C/L WILMINGTON AVE 35FT± NW TP NO 549712H 0.8MI± S 223RD ST 100FT± N STORAGE TANK NO 59	SY 3982
GARDENA (1960)	33.781	L+T W SIDE CONC BASE OF FENCE POST 30FT± E C/L WILMINGTON AVE 12FT± NE TP NO 549712H 0.8MI± S 223RD ST 100FT± N STORAGE TANK NO 59	SY 3983
GARDENA (1960)	34.089	CHIS (X) WEDGE MH RIM BELL SYSTEM 28FT± E C/L WILMINGTON AVE 65FT± N TP NO 549717H 300FT± S STORAGE TANK NO 60 0.9MI± S 223RD ST	SY 3984
GARDENA (1960)	29.175	CHIS (X) W EDGE MH RIM BELL SYSTEM 18FT± E C/L WILMINGTON AVE 15FT± SW TP NO 549723H 0.2MI± N SEPULVEDA BLVD	SY 3985
GARDENA (1960)	38.410	L+T E END OF CONC FOR TRAP OF AUTOMATIC SIGNAL 7FT± E C/L WILMINGTON AVE 25FT± N C/L LINCOLN ST	SY 3986
GARDENA (1960)	38.885	L+T E SIDE CONC BASE SEWER MH 5FT± W C/L WILMINGTON AVE 50FT± N C/L PACIFIC ST	SY 3987
GARDENA (1960)	38.892	L+BN CONC BASE NE LEG TOWER NO 77 50FT± W C/L WILMINGTON AVE 1ST TOWER S DELORAS DR	SY 3988
GARDENA (1960)	40.368	L+BN CONC BASE NE LEG TOWER NO 78 50FT± W C/L WILMINGTON AVE 1ST TOWER S SFRR	SY 3989

QUAD-YEAR	ELEV	DESCRIPTION (INCLUDE QUAD AND YEAR IN DESCRIPTION)	BM NUMBER
GARDENA (1960)	41.015	L+T CONC BASE SE LEG TOWER NO 79 50FT± E C/L WILMINGTON AVE 1ST TOWER N OF LOMITA BLVD	SY 3990
BASELINE (1955)	40.137	R D BR CAP 12IN DN IN WELL @ C/L INT WILMINGTON AVE + LOMITA BLVD	SY 3991A
BASELINE (1955)	42.259	LACE MON @ INT BAYPOINT AVE + LOMITA BLVD	SY 3992A
BASELINE (1955)	42.564	LACE MON NR C/L INT LAKME AVE + LOMITA BLVD	SY 3993A
BASELINE (1955)	41.993	LACE MON NR C/L INT BROAD AVE + LOMITA BLVD	SY 3994A
GARDENA (1960)	46.002	12IN CONC MON FLUSH 61FT± W C/L AVALON BLVD + 36FT± N C/L VICTORIA ST MKD (57 C 1932)	SY 4046
GARDENA (1960)	23.773	L+B 1FT± S BCR @ SW COR WALL ST P VICTORIA ST SERVICE RD	SY 4047
GARDENA (1960)	21.969	L+BN S CB VICTORIA ST 2FT± E OF BCR 50FT± W C/L WALL ST	SY 4048
GARDENA (1960)	23.221	CS MON C/L INT S MAIN ST + VICTORIA ST	SY 4049
GARDENA (1960)	23.601	L+BN 150FT± W C/L INT S MAIN ST + 9FT± N C/L VICTORIA ST	SY 4050
GARDENA (1960)	22.055	L+T NR EDGE OF CONC PVMT 20FT± E + 21FT± N C/L INT BROADWAY + VICTORIA ST	SY 4051
GARDENA (1960)	26.233	L+T 4FT± W OF SE BCR 45FT± E + 23FT± S C/L INT FIGUEROA ST + VICTORIA ST	SY 4052
GARDENA (1960)	25.399	LACE MON C/L INT FIGUEROA ST + 190TH ST (VICTORIA ST) (USE W BOLT)	SY 4053
GARDENA (1960)	33.591	L+BT SPK NE WIGNWALL 100FT± S 190TH ST + 70FT± E BLDG NO 802 W 190TH ST 400FT± E VERMONT AVE	SY 4054
GARDENA (1960)	33.394	LACE MON C/L INT VERMONT AVE + 190TH ST	SY 4055
GARDENA (1960)	33.329	LACE MON 35FT± N C/L INT VERMONT AVE + 190TH ST	SY 4056
GARDENA (1960)	40.730	RAM SET W WINGWALL 200FT± S C/L 190TH ST OPP HSE NO 1105 W 190TH ST	SY 4057
GARDENA (1960)	39.458	L+BR IN CB 10FT± E BCR @ NW COR MEYLER ST + 223RD ST	SY 4074
GARDENA (1960)	39.593	SPK CONC PVMT 14FT± W C/L VERMONT AVE + 25FT± S C/L 223RD ST 1FT± E OF EDGE OF PVMT	SY 4076
GARDENA (1960)	39.514	LACE MON 2FT± NE C/L INT VERMONT AVE + 223RD ST	SY 4077
GARDENA (1960)	39.634	LACE MON 2FT± SW INT 223RD ST + FIGUEROA ST	SY 4078
GARDENA (1960)	39.599	L+BN CONC FOOTING OF MESH FENCE @ SW COR OF PROP HSE NO 421 W 223RD ST 25FT± N C/L 223RD ST 500FT± E FIGUEROA ST	SY 4080
GARDENA (1960)	38.490	LACE MON 2FT± SW C/L INT MONETA AVE + 223RD ST	SY 4081

OUT
OUT

OUT

QUAD-YEAR	ELEV	DESCRIPTION (INCLUDE QUAD AND YEAR IN DESCRIPTION)	BM NUMBER
GARDENA (1960)	39.100	L+BN N END 2ND STEP @ E END PORCH HSE NO 266 W 223RD ST 55FT± S C/L	SY 4082
GARDENA (1960)	36.262	L+T NR W EDGE CONC DRWY TO GARAGE OF HSE NO 165 W 223RD ST 50FT± N C/L	SY 4083
GARDENA (1960)	34.144	L+SPK IN CB 5FT± S BCR @ SE COR DOLORES ST + E 223RD ST	SY 4084
GARDENA (1960)	33.041	L+BN IN CB 3FT± S BCR @ SE COR CATSKILL AVE + E 223RD ST SERVICE ROAD	SY 4085
GARDENA (1960)	31.817	L+T IN CB SERVICE ISLAND 5FT± E BCR @ SE COR GRACE ST + E 223RD ST	SY 4086
GARDENA (1960)	32.007	L+BN IN CB 3FT± N BCR @ NW COR GRACE ST + E 223RD ST	SY 4087
GARDENA (1960)	29.436	LACE TAG IN CB SW COR 223RD ST + AVALON BLVD 58FT S + 45FT W C/L INT	SY 4088A
GARDENA (1960)	79.165	L+BN N CB ARTESIA ST 4FT± W 1ST CATCH BASIN W OF OVERHEAD OF PERR 0.3MI± W ALAMEDA ST	SY 4112
GARDENA (1960)	79.411	STATE HWY MON IN WELL CTR PKWY ARTESIA ST 45FT± S 1ST CATCH BASIN W OF OVERHEAD OF PERR 0.3MI± W ALAMEDA ST	SY 4113
GARDENA (1960)	86.602	STATE HWY MON IN WELL CTR PKWY 1300FT± W PERR OVERHEAD LONG BEACH LINE OPP CULV 0.55MI± W ALAMEDA ST	SY 4114
GARDENA (1960)	92.154	STATE HWY MON IN WELL CTR PKWY 2100FT± W PERR OVERHEAD LONG BEACH LINE OPP CULV 0.4MI± E WILMINGTON AVE	SY 4115
GARDENA (1960)	103.893	STATE HWY MON IN WELL CTR PKWY 3000FT± W PERR OVERHEAD LONG BEACH LINE 50FT± W CULV 0.25MI± E WILMINGTON AVE	SY 4116
GARDENA (1960)	107.497	L+BN E END OF CATCH BASIN @ NE COR ARTESIA BLVD + WILMINGTON BLVD	SY 4117
GARDENA (1960)	110.478	L+BN E END CATCH BASIN @ SW COR ARTESIA BLVD + WILMINGTON AVE	SY 4118
GARDENA (1960)	31.299	USC+GS MON 2FT± ABOVE GROUND IN W SIDE OF DOMINGUEZ WATER CO BLDG 46FT± E C/L ALAMEDA ST + 100FT± S C/L CARSON ST MKD (D 167 1933)	SY 4119
GARDENA (1960)	OUT 26.7	L+BN SW COR CONC SLAB OF GAS VALVES @ E ENT TO NO 2307 CARSON ST 60FT± N C/L	SY 4120
GARDENA (1960)	27.121	L+BN TOP OF NE GUARD POLE OF FIRE PLUG 0.2MI± W ALAMEDA @ W ENT TO NO 2307 CARSON ST 30FT± N C/L	SY 4121
GARDENA (1960)	24.190	L+BN IN CONC FTG 6FT CHAIN LINK FENCE @ SW COR STEEL YD 40FT N C/L CARSON ST 15FT E RR TRACK 0.2MI W ALAMEDA ST MKD (BM)	SY 4122A
GARDENA (1960)	22.854	L+BN IN CONC FTG OF 6FT CHAIN LINK FENCE @ SE COR STEEL YD 50FT N C/L CARSON ST 15FT W RR TRACK 0.4MI W ALAMEDA ST MKD (BM)	SY 4123A
GARDENA (1960)	20.125	L+BN CONC DRWY OF HSE NO 21633 VERA ST 33FT W C/L + 110FT N CARSON ST MKD (BM)	SY 4124A
GARDENA (1960)	18.077	L+T SW COR E CONC DRWY TO HSE NO 1211 CARSON ST 31FT± N C/L + 250FT± E C/L PERRY ST	SY 4125

OUT

DISTURBED

QUAD-YEAR	ELEV	DESCRIPTION (INCLUDE QUAD AND YEAR IN DESCRIPTION)	BM NUMBER
GARDENA (1960)	16.732	L+BN CONC SLAB 48FT S C/L CARSON ST 33FT W C/L PERRY ST	SY 4126A
GARDENA (1960)	17.793	L+BN NW COR CONC SLAB TO BLDG NO 1906 CARSON ST 70FT± S C/L + 25FT± E C/L COMPTON ST	SY 4127
BASELINE (1955)	66.063	CS MON IN WELL 4FT± E OF W CB ALAMEDA ST E BARREL 24FT± W C/L ALAMEDA ST E BARREL + 48FT± N C/L COMPTON BLVD MKD (BM 5-21 RE 329 1951)	SY 4130A
GARDENA (1960)	55.284	L+T CONC PORCH BLDG NO 18611 WESTERN AVE 108FT± S + 63FT± W C/L INT 186TH ST + WESTERN AVE 20FT± N OF S END OF CONC PORCH	SY 4245
GARDENA (1960)	53.001	LACE HEX MON IN WELL @ C/L INT 186TH ST + WESTERN AVE	SY 4246
GARDENA (1960)	50.285	LACE HEX MON IN WELL @ C/L INT 182ND ST + WESTERN AVE	SY 4247
GARDENA (1960)	51.892	L+BN W END CONC BASE GAS PUMPS NE COR 182ND ST + WESTERN AVE 40FT± N + 44FT± E C/L INT	SY 4248
GARDENA (1960)	46.300	L+T CONC WK TO BLDG NO 17810 WESTERN AVE 100FT± S + 49FT± E C/L INT 178TH ST + WESTERN AVE	SY 4249
GARDENA (1960)	42.933	LACE BR CAP IN WELL @ C/L INT 178TH ST + WESTERN AVE	SY 4250
GARDENA (1960)	26.883	L+RDBM TAG 1FT± E BCR @ SE COR ARTESIA BLVD + WESTERN AVE 58FT± E + 40FT± S C/L INT	SY 4251
GARDENA (1960)	25.770	LACE MON IN WELL @ C/L INT WESTERN AVE + ARTESIA BLVD	SY 4252
GARDENA (1960)	37.842	L+SPK IN MC IN SE COR 169TH PL + WESTERN AVE 25FT± S + 35FT± E C/L INT MKD (M 7)	SY 4253
GARDENA (1960)	37.539	L+BR W CB WESTERN AVE 10FT± N C/L PROD 169TH PL 30FT± W C/L WESTERN AVE	SY 4254
GARDENA (1960)	38.894	RDBM TAG 1FT± E BCR @ SE COR WESTERN AVE + 166TH ST 28FT± S + 48FT± E C/L INT	SY 4255
GARDENA (1960)	39.020	L+SPK 1FT± N CATCH BASIN NW COR WESTERN AVE + 166TH ST 50FT± N + 25FT± W C/L INT	SY 4256
GARDENA (1960)	41.569	RDBM TAG S CB 40FT± E BCR @ SE COR MARKET ST + WESTERN AVE 30FT± S + 80FT± E C/L INT	SY 4257
GARDENA (1960)	41.837	CUT SPK E CB 1FT± N BCR @ NE COR MARKET ST + WESTERN AVE 45FT± N + 30FT± E C/L INT	SY 4258
GARDENA (1960)	47.127	L+BN IN N CB 1FT± W BCR @ NW COR REDONDO BEACH BLVD + WESTERN AVE 35FT± W + 30FT± N C/L INT	SY 4259
GARDENA (1960)	47.316	RDBM TAG N CB 1FT± E BCR @ NE COR WESTERN AVE + REDONDO BEACH BLVD 45FT± E + 30FT± N C/L INT	SY 4260
GARDENA (1960)	52.503	L+N 1FT± S BCR @ SW COR WESTERN AVE + COMPTON BLVD 41FT± S + 35FT± W C/L INT	SY 4263
GARDENA (1960)	53.232	RDBM TAG 4FT± N BCR @ NE COR WESTERN AVE + COMPTON BLVD 40FT± E + 40FT± N C/L INT	SY 4264
GARDENA (1960)	50.433	L+T W CB 35FT± W C/L WESTERN AVE ON C/L PROD 147TH ST	SY 4265

QUAD-YEAR	ELEV	DESCRIPTION (INCLUDE QUAD AND YEAR IN DESCRIPTION)	BM	NUMBER
GARDENA (1960)	50.865	L+T N CB @ NE COR WESTERN AVE + 147TH ST 67FT± E + 14FT± N C/L INT	SY	4266
GARDENA (1960)	45.771	RDBM TAG 5FT± S OF S END CATCH BASIN @ SE COR 139TH ST + WESTERN AVE 38FT± E + 78FT± S C/L INT	SY	4267
GARDENA (1960)	45.918	L+BN N END OF CATCH BASIN @ SW COR 139TH ST + WESTERN AVE 54FT± S + 39FT± W C/L INT	SY	4268
GARDENA (1960)	47.077	L+BN 1FT± N BCR @ SW COR WESTERN AVE + 135TH ST 41FT W + 53FT± S C/L INT	SY	4269
GARDENA (1960)	47.254	RDBM TAG 2FT± N BCR @ NW COR WESTERN AVE + 135TH ST 94FT± N + 40FT± W C/L INT	SY	4270
GARDENA (1960)	52.246	RDBM TAG 9FT± S BCR @ SW COR 132ND ST + WESTERN AVE 40FT± W + 65FT± S C/L INT	SY	4271
GARDENA (1960)	53.872	L+BN 1FT± N BCR @ NW COR 132ND ST + WESTERN AVE 40FT± W + 56FT± N C/L INT	SY	4272
GARDENA (1960)	131.876	RDBM TAG 4FT± N BCR @ NE COR WESTERN AVE + 124TH ST 40FT± E + 50FT± N C/L INT	SY	4273
GARDENA (1960)	37.248	L+T S CB @ SE COR 166TH ST + DENKER AVE 20FT± S + 22FT± E C/L INT	SY	4295
GARDENA (1960)	36.880	L+T N CB @ NW COR 166TH ST + DALTON AVE 20FT± N + 20FT W C/L INT	SY	4296
GARDENA (1960)	45.346	L+BN 2FT E ENT CATCH BASIN @ NE COR REDONDO BEACH BLVD + RUTHELEN AVE 60FT± E + 36FT± N C/L INT	SY	4297
GARDENA (1960)	45.219	RDBM TAG 3FT± N ENT CATCH BASIN W CB RUTHELEN AVE 100FT± N C/L REDONDO BEACH BLVD	SY	4298
GARDENA (1960)	43.049	L+BN IN CB 65FT± S C/L REDONDO BEACH BLVD FRONT OF HSE NO 2072 1900FT± W WESTERN AVE	SY	4299
GARDENA (1960)	40.160	RDBM TAG N CB REDONDO BEACH BLVD SERVICE ROAD 1FT± S LIGHT POLE IN FRONT OF HSE NO 2607 REDONDO BEACH BLVD 80FT± N C/L + 1200FT± W ARLINGTON BLVD	SY	4301
GARDENA (1960)	40.230	RDBM TAG S CB REDONDO BEACH BLVD 40FT± S C/L + 250FT± E C/L WILKIE AVE	SY	4302
GARDENA (1960)	40.929	L+BN IN N CB S SERVICE ROAD 1FT E BCR 48FT S C/L REDONDO BEACH BLVD 40FT± E C/L ATKINSON AVE	SY	4303
GARDENA (1960)	41.543	RDBM TAG N CB REDONDO BEACH BLVD 40FT± N C/L + 34FT± W C/L PROD ATKINSON AVE	SY	4304
BASELINE (1955)	82.983	RAM SET ISLAND CB @ CTR N CB RET @ INT HAWTHORNE BLVD + SEPULVEDA BLVD 40FT± N + 5FT± E C/L INT	SY	4844
BASELINE (1955)	82.485	RAM SET ISLAND CB ^{0.5} 5FT± S BCR @ INT HAWTHORNE BLVD + SEPULVEDA BLVD 65FT± S + 5FT± W C/L INT	SY	4845
BASELINE (1955)	78.583	L+T ISLAND CB 5FT± N BCR @ INT HAWTHORNE BLVD + OLD LOMITA BLVD 50FT± N + 6FT± W C/L INT	SY	4846
BASELINE (1955)	78.279	L+BN ISLAND CB 5FT± S BCR @ INT HAWTHORNE BLVD + OLD LOMITA BLVD 50FT± S + 15FT± W C/L INT	SY	4847
BASELINE (1955)	85.364	RAM SET ISLAND CB C/L HAWTHORNE BLVD 34FT± N C/L 240TH ST	SY	4848

QUAD-YEAR	ELEV	D E S C R I P T I O N (INCLUDE QUAD AND YEAR IN DESCRIPTION)	BM NUMBER
BASELINE (1955)	86.853	RAM SET W CB ISLAND 2FT± S BCR @ INT HAWTHORNE BLVD + 240TH ST 45FT± S + 15FT± W C/L INT	SY 4849
BASELINE (1955)	50.772	L+ROUND HD SPK 6FT± N BCR @ NW COR COMPTON BLVD + CRENSHAW BLVD 60FT± N + 38FT± W C/L INT MKD (W7)	SY 4851
BASELINE (1955)	108.242	L+BR @ SW COR CONC ISLAND OF GAS PUMP 65FT± N + 100FT± E C/L INT ROSECRANS AVE + SAN PEDRO ST MKD (BM)	SY 5712
BASELINE (1955)	108.750	L+BR @ SW COR CONC SLAB GAS STA ISLAND 122FT± N + 62FT± W C/L INT ROSECRANS AVE + SAN PEDRO ST	SY 5713
BASELINE (1955)	113.257	LACE MON IN WELL @ OR NR C/L INT ROSECRANS AVE + MAIN ST MKD (TRAV STA WATTS D 12)	SY 5714
BASELINE (1955)	114.428	L+N S END CONC HDWL CULV 37FT± N + 24FT W C/L INT ROSECRANS AVE + MAIN ST	SY 5715
BASELINE (1955)	100.163	LACE MON IN WELL @ OR NR C/L INT FIGUEROA ST + ROSECRANS AVE MKD (TRAV STA WATTS C 12 B 1946)	SY 5716
BASELINE (1955)	90.961	L+ROUND HD SPK N CB HARBOR FREEWAY OVERPASS 42FT± N C/L ROSECRANS AVE + 70FT± E C/L OVERPASS	SY 5717
BASELINE (1955)	89.670	L+SPK N CB ROSECRANS AVE 2FT E BCR 159FT W C/L HARBOR FREEWAY OVERPASS + 42FT± N C/L ROSECRANS AVE 23FT E C/L HOOVER ST	SY 5718
BASELINE (1955)	64.396	R D MON NR N END CONC HDWL CULV 27FT± E C/L MAIN TRACK SPRR 45FT W C/L ALAMEDA ST E BARREL 17FT S C/L PROD RAYMOND ST MKD (19)	SY 5783
BASELINE (1955)	64.231	USC+GS MON NR S END CULV HDWL 10FT± W C/L SPRR + 70FT± E C/L ALAMEDA ST W BARREL 90FT± N C/L PROD CALDWELL ST MKD (T 615 1941)	SY 5784
BASELINE (1955)	55.404	MWD MON 3FT E OF E CB ALAMEDA ST 26FT E C/L 42FT± N PP NO 241565E OPP GATE NO 18011 0.5MI± S ARTESIA BLVD MKD (56E 1933)	SY 5785
BASELINE (1955)	53.425	RDBM MON FLUSH 4FT E OF E CB ALAMEDA ST 26FT± E C/L + 19FT± S PP NO 241565E 61FT± S OF S END CONC CULV 0.5MI± S ARTESIA BLVD MKD (BM 15)	SY 5786
BASELINE (1955)	49.785	USC+GS MON NR N END SFRR CULV HDWL 8FT W C/L SFRR TRACKS 67FT E C/L ALAMEDA ST + 450FT± S C/L INT ALAMEDA ST + PERR MKD (F52 1926)	SY 5787
BASELINE (1955)	26.529	R D MON 6IN DN ALAMEDA ST 27FT W C/L + 225FT S C/L CARSON ST MKD (BM 7)	SY 5788
BASELINE (1955)	21.788	R D MON 4IN DN 3FT± W OF W CB ALAMEDA ST 25FT± W C/L 1070FT± S 223RD ST 30FT S PP NO 444418E MKD (BM 6)	SY 5789
BASELINE (1955)	21.954	R D MON 6IN DN 3FT W OF W CB ALAMEDA ST 25FT± W C/L 13FT S GP NO 444419 1145FT S 223RD ST MKD (BM 5)	SY 5790
BASELINE (1955)	16.632	R D MON W CB ALAMEDA ST 35FT W C/L 281FT± N C/L SEPULVEDA BLVD 45FT± S CATCH BASIN MKD (Y 3)	SY 5791
BASELINE (1955)	37.041	CS MON IN CONC POST 2IN UP LAC BOUNDARY LINE 80FT± S SPUR TRACK TO TANK FARM 600FT± W ALAMEDA ST 3.5MI± S SEPULVEDA BLVD MKD (CO SUR RE 5869 LA CO-LA CITY)	SY 5792

QUAD-YEAR	ELEV	DESCRIPTION (INCLUDE QUAD AND YEAR IN DESCRIPTION)	BM NUMBER
BASELINE (1955)	41.612	L+PN CONC BASE CHAIN LINK FENCE POST @ GATE TO SPUR TRACK INTO (ETHYL CORT) YD 50FT# N TRACK 86FT# N C/L DIRT ROAD (LCMITA BLVD) 90FT# W CONC ENT ROAD 3.4MI# E WILMINGTON AVE	SY 5793
BASELINE (1955)	137.298	L+BN S CB 20FT# W C/L REED DR + 38FT# S C/L PACIFIC COAST HWY MKD (BM)	SY 5794
BASELINE (1955)	139.248	L+PHILLIPS SCREW N CB 1FT# BCR @ NE COR PACIFIC COAST HWY + CRENSHAW BLVD 40FT# N + 65FT# E C/L INT	SY 5795
BASELINE (1955)	140.674	RDBM TAG N CB 1FT# E BCR @ NW COR PACIFIC COAST HWY + CRENSHAW BLVD 40FT# N + 65FT# W C/L INT	SY 5796
BASELINE (1955)	95.060	CS MON IN WELL 18IN DN @ C/L INT PACIFIC COAST HWY + HAWTHORNE BLVD MKD (TORRANCE K-12 1942)	SY 5799
GARDENA (1960)	54.646	RDBM TAG W CB NORMANDIE AVE 1000FT# N SEPULVEDA BLVD OPP BLDG NO 23108	SY 5800
GARDENA (1960)	47.022	LAC MON IN WELL 8IN DN @ C/L INT NORMANDIE AVE + 228TH ST	SY 5801
GARDENA (1960)	124.066	L+T SW COR CONC SLAB FORMER CIL FIELD OFFICE 175FT# N C/L VICTORIA ST 1000FT# W C/L CENTRAL AVE MKD (BM)	SY 5802
GARDENA (1960)	135.873	L+BN SW COR FOOTING OIL RIG (CARPENTER NO 1) 160FT# N C/L VICTORIA ST 1400FT# E C/L WILMINGTON AVE MKD (BM)	SY 5803
GARDENA (1960)	129.142	L+BN @ NE COR 6FT CHAIN LINK FENCE AROUND WATER PUMP 58FT# S C/L VICTORIA AVE + 1500FT# E C/L WILMINGTON AVE MKD (BM)	SY 5804
GARDENA (1960)	109.129	L+BN NE COR CONC FOUNDATION OF SHELL OIL TANKS 130FT# S C/L VICTORIA ST 2500FT# E WILMINGTON AVE	SY 5805
GARDENA (1960)	107.826	L+BN NE COR CONC FOUNDATION OIL MOTOR PIT 106FT# S C/L VICTORIA ST 2500FT E WILMINGTON AVE MKD (BM)	SY 5806
GARDENA (1960)	93.415	L+BN SE COR CONC BASE FOR VENT PIPE @ NW COR VICTORIA ST + ROAD TO AUTONETICS 20FT# N C/L + 70FT W C/L INT	SY 5807
GARDENA (1960)	90.673	L+BN E CB 50FT N FUTURE BCR @ NE COR VICTORIA ST + ROAD TO AUTONETICS 77FT# N + 20FT E C/L INT MKD (BM)	SY 5808
GARDENA (1960)	23.610	L+T CTR CONC HDWL @ SW COR SEPULVEDA BLVD + VERMONT AVE 45FT# S + 50FT W C/L INT	SY 5809
GARDENA (1960)	23.367	L+T CTR CONC HDWL @ SW COR SEPULVEDA BLVD + VERMONT AVE 45FT# S + 60FT E C/L INT	SY 5810
GARDENA (1960)	20.456	LACE MON IN WELL 12IN DN @ C/L INT SEPULVEDA BLVD + FIGUEROA ST	SY 5811
GARDENA (1960)	22.402	L+T S CB SERVICE ISLAND E SIDE FIGUEROA ST 52FTS8 E C/L 6FT# S C/L SEPULVEDA BLVD	SY 5812
GARDENA (1960)	30.864	L+T N CB SERVICE ISLAND SEPULVEDA BLVD 2000FT# E C/L FIGUEROA ST MKD (BM)	SY 5813
GARDENA (1960)	30.882	L+T S CB SERVICE ISLAND SEPULVEDA BLVD 2000FT# E SY	5814

QUAD-YEAR	ELEV	DESCRIPTION (INCLUDE QUAD AND YEAR IN DESCRIPTION)	BM NUMBER
GARDENA (1960)	37.425	L+T N CB 1FT W BCR @ NW COR SEPULVEDA BLVD + DOLORES ST 40FT N + 56FT W C/L INT	SY 5815
GARDENA (1960)	37.724	L+BN E CB 18FT N CBR @ NE COR SEPULVEDA BLVD + DOLORES ST 9CFT# N 28FT E C/L INT MKD (BM)	SY 5816
GARDENA (1960)	35.926	L+T N CB 1FT W BCR @ NW COR SEPULVEDA BLVD + C/L FIGUEROA ST MKD (BM) PANAMA AVE 40FT# N + 50FT W C/L INT	SY 5817
GARDENA (1960)	36.063	L+BN N CB 1FT# E BCR @ NE COR SEPULVEDA BLVD + PANAMA AVE 40FT# N + 45FT# E C/L INT	SY 5818
GARDENA (1960)	³⁵ 36 .787	L+T W CB 1FT# S OF FUTURE BCR @ SW COR SEPULVEDA BLVD + BANNING BLVD 75FT# S + 15FT# W C/L INT	SY 5819
GARDENA (1960)	35.755	L+T E CB 1FT# S FUTURE BCR @ SE COR SEPULVEDA BLVD + BANNING BLVD 75FT# S + 15FT# E C/L INT	SY 5820
GARDENA (1960)	37.903	L+BN N CB SEPULVEDA BLVD 20FT# N C/L 3.2MI# E WILMINGTON AVE OPP DRWY TO RICHFIELD OIL TANK FARM MKD (BM)	SY 5821
GARDENA (1960)	37.888	L+BN S CB SEPULVEDA BLVD 20FT# S C/L 0.2MI# E WILMINGTON AVE 35FT# W DRWY TO RICHFIELD OIL TANK FARM	SY 5822
GARDENA (1960)	38.066	BR MON FLUSH NW COR 6FT CHAIN LINK FENCE 25FT# S SEPULVEDA BLVD 3.4MI E WILMINGTON AVE 29FT# W DRWY OIL VALVE STA MKD (LS 2779)	SY 5823
GARDENA (1960)	36.737	L+BN N CB SEPULVEDA BLVD 20FT# N C/L 0.4MI# E WILMINGTON AVE OPP SMALL DRWY TO OIL VALVE STA MKD (BM)	SY 5824
GARDENA (1960)	26.454	L+T N CB 1FT W BCR @ NW COR 223RD ST + BONITA ST 40FT# N + 76FT W C/L INT MKD (BM)	SY 5825
GARDENA (1960)	25.206	L+T E CB 1FT# N BCR @ NE COR 223RD ST + BONITA ST 76FT# N + 20FT# E C/L INT MKD (BM)	SY 5826
GARDENA (1960)	24.298	ROUND HD SPK CONC WK HSE @ NW COR 223RD ST + EDGAR ST 43FT# N + 33FT# W C/L INT	SY 5827
GARDENA (1960)	23.940	L+T CONC DRWY HSE 35FT# N C/L 223RD ST + 105FT# E C/L EDGAR ST MKD (BM)	SY 5828
GARDENA (1960)	24.208	L+T W CONC FOOTING OF WIDE GATE TO LUMBER YD 43FT# N C/L 223RD ST + 346FT# W C/L LUCERNE ST MKD (BM)	SY 5829
GARDENA (1960)	23.116	L+T CONC @ NW COR 223RD ST + LUCERNE ST 71FT# N + 24FT W C/L INT MKD (BM)	SY 5830
GARDENA (1960)	20.775	L+T W CB DRWY PLASTIC CO 53FT# S C/L 223RD ST 100FT E WILMINGTON AVE MKD (BM)	SY 5831
GARDENA (1960)	20.760	L+T E CB DRWY TO PLASTIC CO 53FT# S C/L 223RD ST 100FT# E WILMINGTON AVE MKD (BM)	SY 5832
GARDENA (1960)	21.032	ROUND HD SPK CONC FOOTING OF W GATE POST TO TRUCKING YD 30FT# S C/L 223RD ST 200FT# E WILMINGTON AVE MKD (BM)	SY 5833
GARDENA (1960)	21.106	L+T CONC FOOTING E GATE POST TO TRUCKING YD 30FT# S C/L 223RD ST 200FT E WILMINGTON AVE MKD (BM)	SY 5834
GARDENA (1960)	23.313	L+BN N 4IN GUARD POST @ SE COR CARSON ST + MARTIN ST 5CFT# S + 20FT# E C/L INT MKD (BM)	SY 5835

MAY BE DISTURBED

DISTURBED

QUAD-YEAR	ELEV	DESCRIPTION (INCLUDE QUAD AND YEAR IN DESCRIPTION)	BM NUMBER
GARDENA (1960)	OUT	L+BN W 2IN GUARD POST @ NE COR CARSON ST + MARTIN ST 40FT± N + 20FT± E C/L INT MDK (BM)	SY 5836
GARDENA (1960)	20.114	L+BN CONC DRWY HSE NO 21620 VERA ST 28FT± E C/L + 135FT± N C/L CARSON ST MKD (BM)	SY 5837
GARDENA (1960)	16.561	L+T SE COR CONC SLAB CROSS GUTTER @ SE COR CARSON ST + BONITA ST 50FT± S + 15FT± E C/L INT <i>(PIPE LEAKING - DISTURBED P 5838)</i>	SY 5838
GARDENA (1960)	19.188	CS MON IN WELL 8IN DN NE COR CARSON ST + AVALON BLVD 79FT± N + 16FT± E COL INT MKD (BM 23 9)	SY 5839
GARDENA (1960)	29.984	L+T @ NW COR CONC PORCH BLDG @ SE COR CARSON ST + DOLORES ST 60FT± S + 45FT± E C/L INT	SY 5840
GARDENA (1960)	27.363	CS MON IN WELL 12IN DN @ C/L INT CARSON ST + DOLORES ST	SY 5841
GARDENA (1960)	35.565	LACE MON IN WELL 8IN DN @ C/L INT CARSON ST + VERMONT AVE	SY 5842
GARDENA (1960)	36.617	L+T CONC APRON GAS STATION FILLER BOX @ NW COR CARSON ST + VERMONT AVE 42FT± N + 150FT± W C/L INT MKD (BM)	SY 5843
GARDENA (1960)	39.681	RAM SET N CB 2FT± W BCR @ NW COR CARSON ST + BUDLONG AVE 60FT W + 40FT± N C/L INT	SY 5844
GARDENA (1960)	57.024	L+WIRE SPK E CB 40FT± S BCR @ SE COR CARSON ST + WESTERN AVE 40FT E + 95FT± S C/L INT	SY 5845
GARDENA (1960)	57.701	MWD MON FLUSH W/CB @ NW COR CARSON ST + WESTERN AVE 125FT W + 28FT± N C/L INT MKD (57H 1933)	SY 5846
BASELINE (1955)	86.368	CS MON IN WELL 4IN DN SE COR CARSON ST + CRENSHAW BLVD 32FT± E + 28FT± S C/L INT MKD (22-10 1960)	SY 5847
BASELINE (1955)	86.259	BT SPK W CB 8FT± S BCR @ SW COR CARSON ST + CRENSHAW BLVD 40FT± W + 64FT± S C/L INT	SY 5848
GARDENA (1960)	124.834	STATE HWY MON IN WELL 8IN DN C/L ARTESIA BLVD PKWY 1300FT± W WILMINGTON AVE	SY 5849
GARDENA (1960)	123.166	L+BR NR CTR CONC HDWL 60FT± C C/L ARTESIA BLVD + 1300FT± W WILMINGTON AVE MKD (218+00)	SY 5850
GARDENA (1960)	124.857	STATE HWY MON IN WELL 10IN DN @ BC 4FT± N PKWY CB 70FT E CENTRAL AVE	SY 5851
GARDENA (1960)	122.832	STATE HWY MON IN WELL 12IN DN @ C/L INT CENTRAL AVE + ARTESIA BLVD	SY 5852
GARDENA (1960)	91.465	L+N CONC GUTTER @ BOX CULV C/L ARTESIA BLVD @ BREAK IN ISLAND 1100FT± W CENTRAL AVE MKD (POT)	SY 5853
GARDENA (1960)	91.562	L+BN CTR CONC HDWL 35FT± N C/L ARTESIA BLVD 1100FT± W CENTRAL AVE MKD (BM)	SY 5854
GARDENA (1960)	46.383	L+BN CONC HDWL OF OIL FIELD UNDERPASS 40FT S C/L ARTESIA BLVD + 1000FTS E AVALON BLVD MKD (BM)	SY 5855
GARDENA (1960)	46.855	L+BN CONC HDWL OIL FIELD UNDERPASS 40FT± N C/L ARTESIA BLVD + 1000FT± E AVALON BLVD MKD (BM)	SY 5856
GARDENA (1960)	35.039	L+ROUND HD NAIL CTR HDWL 35FT S C/L ARTESIA BLVD 1000FT E MAIN ST	SY 5857

QUAD-YEAR	ELEV	DESCRIPTION (INCLUDE QUAD AND YEAR IN DESCRIPTION)	BM NUMBER
GARDENA (1960)	34.071	L+BN CTR HDWL 35FT± N C/L ARTESIA BLVD 1000FT± E MAIN ST MKD (BM)	SY 5858
GARDENA (1960)	30.196	L+BN N CB 1FT W BCR NE COR ARTESIA BLVD + MAIN ST 45FT± N + 70FT± E C/L INT MKD (BM)	SY 5859
GARDENA (1960)	28.710	LACE MON IN WELL 24IN DN @ C/L INT ARTESIA BLVD + MAIN ST	SY 5860
GARDENA (1960)	27.031	L+WIRE SPK N CB 20FT E BCR @ NE COR ARTESIA BLVD + FIGUEROA ST 45FT± N + 75FT± E C/L INT	SY 5861
GARDENA (1960)	26.277	LACE MON IN WELL 8IN DN @ C/L INT FIGUEROA ST + WALNUT ST	SY 5862
GARDENA (1960)	22.313	ROUND HD SPK E END BRIDGE NO 58 1034 82FT± E C/L VERMONT AVE + 50FT± S C/L ARTESIA BLVD MKD (BM)	SY 5863
GARDENA (1960)	21.130	STD SUR MON C/L INT VERMONT AVE + ARTESIA BLVD MKD (B 4C)	SY 5864
GARDENA (1960)	21.788	LACE MON IN WELL 8IN DN @ C/L INT ARTESIA BLVD + NORMANDIE AVE (USE W MON)	SY 5865
GARDENA (1960)	22.460	RAM SET CONC FOOTING SIGNAL POLE ON NW COR ARTESIA BLVD + NORMANDIE AVE 40FT± W + 50FT± N C/L INT MKD (BM)	SY 5866
GARDENA (1960)	23.146	LACE MON IN WELL 10IN DN C/L ARTESIA BLVD 6FT± E C/L DALTON AVE	SY 5867
GARDENA (1960)	23.726	L+BN E CB 1FT± N BCR @ NE COR ARTESIA BLVD + DALTON AVE 70FT± N + 18FT± E C/L INT MKD (BM)	SY 5868
GARDENA (1960)	38.871	LACE MON IN WELL 10IN DN @ C/L ARTESIA BLVD + 6FTS8 W C/L GRAMERCY PL	SY 5869
GARDENA (1960)	40.000	L+N S CB 58FT W C/L GRAMERCY PL + 45FT± S C/L ARTESIA BLVD	SY 5870
BASELINE (1955)	53.862	LA CITY TRIANGULATION MON IN WELL 6IN DN @ C/L INT ARTESIA BLVD + CRENSHAW BLVD	SY 5871
GARDENA (1960)	99.561	L+T W CB 1FT± S BCR @ SW COR CENTRAL AVE + 148TH ST 40FT± S + 38FT± W C/L INT	SY 5872
GARDENA (1960)	99.683	L+T E CB 1FT± S BCR @ SE COR CENTRAL AVE + BRAZIL ST 52FT± S + 38FT± E C/L INT MKD (9+81)	SY 5873
GARDENA (1960)	98.315	RAM SET N CB 12FT± W BCR @ NW COR COMPTON BLVD + CENTRAL AVE 34FT± N + 100FT W C/L INT	SY 5874
GARDENA (1960)	98.430	L+T W CB 10FT S BCR @ SW COR COMPTON BLVD + CENTRAL AVE 70FT± S + 52FT± W C/L INT	SY 5875
GARDENA (1960)	97.543	L+BN W CB SERVICE ISLAND 40FT± N C/L 154TH ST + 50FT± W C/L CENTRAL AVE	SY 5876
GARDENA (1960)	98.473	L+T W CB 20FT± S BCR @ SW COR 154TH ST + CENTRAL AVE 60FT± S + 38FT± W C/L INT MKD (BM)	SY 5877
GARDENA (1960)	98.183	L+T N CB ALONDRA BLVD 14FT± E BCR @ NW COR CENTRAL AVE	SY 5878
GARDENA (1960)	97.127	L+SPK 3FT± W BCR @ SE COR ALONDRA BLVD + CENTRAL AVE	SY 5879
GARDENA (1960)	94.866	RDBM TAG E CB 1FT± N BCR @ NE COR CENTRAL AVE + CALDWELL ST 56FT± N + 38FT± E C/L INT	SY 5880

JUL 1964

LOS ANGELES COUNTY ROAD DEPARTMENT
SURVEY SECTION FIELD ENGINEERING DIVISION

PAGE 30

QUAD-YEAR	ELEV	D E S C R I P T I O N (INCLUDE QUAD AND YEAR IN DESCRIPTION)	BM NUMBER
GARDENA (1960)	94.570	L+T E CB 6FT± S BCR @ SE COR CENTRAL AVE + CALDWELL ST 69FT± S + 38FT± E C/L INT	SY 5881
GARDENA (1960)	93.169	RDMB TAG E END CATCH BASIN @ NE COR CENTRAL AVE + 168TH ST 18FT± N + 57FT± E C/L INT	SY 5882
GARDENA (1960)	93.118	RDBM TAG E END CATCH BASIN @ SE COR CENTRAL AVE + 168TH ST 18FT± S + 57FT± E C/L INT	SY 5883
GARDENA (1960)	42.484	R D BR MON S END W RR ABUT 40FT± W C/L MAIN ST + 1300FT± S SEPULVEDA BLVD MKD (LA CO ROAD DEPT BM NO 42)	SY 5884
GARDENA (1960)	40.335	LACE MON C/L 161ST ST + TRANSIT LINE 30FT± W OF E CB VERMONT AVE E BARREL MKD (COMPTON B2C)	SY 5885
GARDENA (1960)	37.203	LACE DISC 8 H IN BIN MON 2FT± N OF N CB 164TH ST 44FT± W VERMONT AVE W BARREL	SY 5886
GARDENA (1960)	36.161	L+T E CB 3FT± S BCR SE COR VERMONT AVE 164TH ST 35FT± S + 22FT± E C/L INT	SY 5887
GARDENA (1960)	32.698	SPK E CB 1FT± N BCR @ NE COR VERMONT AVE + 168TH ST 37FT± N + 30FT± E C/L INT	SY 5888
GARDENA (1960)	32.381	LACE MON @ C/L INT VERMONT AVE + 168TH ST MKD (COMPTON B 3)	SY 5889
GARDENA (1960)	24.980	FC BR MON E CB OF BRIDGE NO B 1206 @ N END 45FT± E C/L VERMONT AVE + 500FT± S C/L ARTESIA BLVD MKD (BM 131 81)	SY 5890
GARDENA (1960)	32.339	LACE MON C/L INT VERMONT AVE + 182ND ST	SY 5891
GARDENA (1960)	30.457	LACE MON C/L VERMONT AVE NR N C/L PROD ELECTRIC ST 250FT± S C/L 182ND ST MKD (COMPTON B5E)	SY 5892
GARDENA (1960)	36.044	L+T S CB 2FT± W BCR @ SW COR VERMONT AVE + 186TH ST 20FT± S + 57FT± W C/L INT	SY 5893